

Harvest Lane Asset Management Absolute Return Fund



Product Disclosure Statement

ARSN 614 662 627
APIR FHT0042AU
Issue Date 3 June 2021

Contents

1. Fund at a glance	3
2. ASIC benchmarks	5
3. ASIC disclosure principles	6
4. Who is managing the Fund?	8
5. How the Fund invests	10
6. Managing risk	13
7. Investing and withdrawing	15
8. Keeping track of your investment	20
9. Fees and other costs	21
10. Taxation	25
11. Other important information	28
12. Glossary of important terms	31

Investment Manager

Harvest Lane Asset Management Pty Ltd
ABN 83 158 314 697
Level 10, 418A Elizabeth Street
Surry Hills NSW 2010
Phone: 1300 419 420
Email: enquiries@harvestlaneam.com.au
Web: www.harvestlaneam.com.au
Corporate Authorised Representative
(CAR) #433046 of Harvest Lane Capital
Pty Ltd AFSL 425 334

Administrator

Mainstream Fund Services Pty Ltd
Unit Registry
GPO Box 4968
Sydney, NSW, 2001
Phone: 1300 133 451 or +61 2 8259 8888
(International)
Fax: (02) 8244 1916
Website: www.mainstreamgroup.com

Responsible Entity

Equity Trustees Limited
ABN 46 004 031 298, AFSL 240975
GPO Box 2307
Melbourne VIC 3001
Ph: +613 8623 5000
Web: www.eqf.com.au/insto

Custodian

J.P. Morgan Securities plc
25 Bank Street
Canary Wharf
London E14 5JP

This Product Disclosure Statement (“PDS”) was issued on 3 June 2021. This PDS is for the offer of units in the Harvest Lane Asset Management Absolute Return Fund (ARSN 614 662 627 APIR FHT0042AU) (referred throughout this PDS as the “Fund”).

The PDS has been prepared and issued by Equity Trustees Limited (ABN 46 004 031 298, Australian Financial Services Licence (“AFSL”) No. 240975) in its capacity as the responsible entity of the Fund (referred throughout this PDS as the “Responsible Entity”, “Equity Trustees”, “us” or “we”). The investment manager is Harvest Lane Asset Management Pty Ltd (referred to throughout this PDS as the “Investment Manager” or “Harvest Lane”). Harvest Lane Asset Management Pty Ltd is an authorised representative (#433046) of Harvest Lane Capital Pty Ltd (ABN 16 158 314 348, AFSL 425 334).

The Responsible Entity has authorised the use of this PDS as disclosure to investors and prospective investors who invest directly in the Fund, as well as investors and prospective investors of an investor directed portfolio service, master trust, wrap account or an investor directed portfolio service-like scheme (“IDPS”). This PDS is available for use by persons applying for units through an IDPS (“Indirect Investors”).

The operator of an IDPS is referred to in this PDS as the “IDPS Operator” and the disclosure document for an IDPS is referred to as the “IDPS Guide”. If you invest through an IDPS, your rights and liabilities will be governed by the terms and conditions of the IDPS Guide. Indirect Investors should carefully read the IDPS Guide before investing in the Fund. Indirect Investors should note that they are directing the IDPS Operator to arrange for their money to be invested in the Fund on their behalf. Indirect Investors do not become unitholders in the Fund or have the rights of unitholders except in relation to access to Equity Trustee’s complaints resolution process (see Section 8). The IDPS Operator becomes the unitholder in the Fund and acquires these rights. The IDPS Operator can exercise or decline to exercise the rights on an Indirect Investor’s behalf according to the arrangement governing the IDPS. Indirect Investors should refer to their IDPS Guide for information relating to their rights and responsibilities as an Indirect Investor, including information on any fees and charges applicable to their investment. Information regarding how Indirect Investors can apply for units in the Fund (including an application form where applicable) will also be contained in the IDPS Guide. Equity Trustees accepts no responsibility for IDPS Operators or any failure by an IDPS Operator to provide Indirect Investors with a current version of this PDS as provided by Equity Trustees or to withdraw the PDS from circulation if required by Equity Trustees.

Please ask your adviser if you have any questions about investing in the Fund (either directly or indirectly through an IDPS).

This PDS is prepared for your general information only. It is not intended to be a recommendation by the Responsible Entity, Investment Manager, any associate, employee, agent or officer of the Responsible Entity, Investment Manager or any other person to invest in the Fund. This PDS does not take into account the investment objectives, financial situation or needs of any particular investor. You should not base your decision to invest in the Fund solely on the information in this PDS. You

should consider whether the information in this PDS is appropriate for you, having regard to your objectives, financial situation and needs and you may want to seek professional financial advice before making an investment decision.

Equity Trustees, the Investment Manager and their employees, associates, agents or officers do not guarantee the success, repayment of capital or any rate of return on income or capital or the investment performance of the Fund. Past performance is no indication of future performance. An investment in the Fund does not represent a deposit with or a liability of Equity Trustees, the Investment Manager or any of their associates. An investment is subject to investment risk, including possible delays in repayment and loss of income or capital invested. Units in the Fund are offered and issued by the Responsible Entity on the terms and conditions described in this PDS. You should read this PDS in its entirety because you will become bound by it if you become a direct investor in the Fund.

In considering whether to invest in the Fund, investors should consider the risk factors that could affect the financial performance of the Fund. Some of the risk factors affecting the Fund are summarised in Section 6.

The offer to which this PDS relates is only available to persons receiving this PDS (electronically or otherwise) in Australia.

This PDS does not constitute a direct or indirect offer of securities in the US or to any US Person as defined in Regulation S under the US Securities Act of 1933 as amended (“US Securities Act”). Equity Trustees may vary its position and offers may be accepted on merit at Equity Trustees’ discretion. The units in the Fund have not been, and will not be, registered under the US Securities Act unless otherwise determined by Equity Trustees and may not be offered or sold in the US to, or for, the account of any US Person (as defined) except in a transaction that is exempt from the registration requirements of the US Securities Act and applicable US state securities laws.

If you received this PDS electronically, you will need to print and read this document in its entirety. We will provide a paper copy free upon request during the life of this PDS. The PDS is available on www.harvestlaneam.com.au or you can request a copy free of charge by calling Harvest Lane on 1300 419 420.

Certain information in this PDS is subject to change. To the extent the change is not materially adverse to investors, we may update this information and provide the update separately to the PDS. You can obtain any updated information:

- by contacting “Harvest Lane” on 1300 419 420; or
- by visiting the “Harvest Lane” website at www.harvestlaneam.com.au

A paper copy of the updated information will be provided free of charge on request.

You may also contact Equity Trustees:

- by writing to GPO Box 2307 Melbourne VIC 3001; or
- by calling +613 8623 5000

Unless otherwise stated, all fees quoted in the PDS are inclusive of GST, after allowing for an estimate for Reduced Input Tax Credits (“RITC”). All amounts are in Australian dollars unless otherwise specified. All references to legislation are to Australian law unless otherwise specified.

1. Fund at a glance

	Summary	For further information
<i>Name of the Fund</i>	Harvest Lane Asset Management Absolute Return Fund	Section 5
<i>APIR Code</i>	FHT0042AU	Section 5
<i>ARSN</i>	614 662 627	Section 5
<i>Investment objective</i>	<p>The Funds' s intention is to deliver consistent positive rates of return. The Fund invests selectively when the potential exists to generate outsized rewards relative to the risk being incurred.</p> <p>The Fund does not track an index and nor is the Fund compelled to be fully or partially invested in the event that Harvest Lane Asset Management Pty Ltd is unable to identify sufficiently attractive opportunities.</p> <p>Returns are not guaranteed.</p>	Section 5
<i>Fund Benchmark</i>	RBA Cash Rate	Section 5
<i>Investment strategy</i>	<p>The Investment Manager intends to target superior risk adjusted returns for its investors. It does this by investing in situations whereby it perceives that the reward on offer is outsized relative to the risk involved in establishing a position.</p> <p>Historically, the Investment Manager has found many such opportunities have existed within the 'event' space and as such regularly invests in merger arbitrage situations, along with select capital raisings and other corporate actions. Past performance is not indicative of future performance.</p> <p>The Fund utilises a variety of instruments to achieve its investment outcomes including Australian and international equities, derivatives and CFDs. Derivative instruments (including CFDs) are used to gain an intended exposure or manage a particular risk.</p>	Section 5
<i>The type(s) of investor(s) for whom the Fund would be suitable</i>	Persons who want exposure to an investment strategy whose returns will reflect the stock selection skills of the Investment Manager, and will be largely uncorrelated with movements in the broader equity market. The risk level of the Fund would be considered to be high.	Sections 5 and 6
<i>Recommended investment timeframe</i>	5 years	Section 5
<i>Minimum initial investment</i>	\$5,000	Section 7
<i>Minimum additional investment</i>	\$1,000 or \$100 via monthly savings plan	Section 7
<i>Minimum withdrawal amount</i>	\$1,000	Section 7
<i>Minimum balance</i>	\$1,000	Section 7
<i>Cut off time for applications and withdrawals</i>	4pm (Sydney time) each Business Day.	Section 7
<i>Valuation frequency</i>	The Fund's assets are normally valued each Business Day.	Section 7
<i>Applications</i>	Accepted each Business Day.	Section 7
<i>Withdrawals</i>	We generally process redemption requests each Business Day. If your redemption request is received before 4pm Sydney time, it will be processed using the unit price effective for that day. If it is received after 4pm, it will be processed effective for the following day. There may be circumstances where withdrawals may be delayed.	Section 7
<i>Income distribution</i>	The Fund will generally distribute its available income annually as at 30 June. However, distributions can vary and may be zero in some years. An investment in the Fund may therefore not be suitable for investors seeking a regular income stream for financial or tax planning purposes.	Section 7
<i>Management fees and costs</i>	1.25% p.a. of the Net Asset Value ("NAV") (including GST less RITCs)	Section 9
<i>Entry fee/exit fee</i>	Nil	Section 9
<i>Buy/Sell spread</i>	+/- 0.25% on applications into the Fund, and withdrawals out of the Fund.	Section 9

	Summary	For further information
<i>Performance fee</i>	A 25% performance fee is payable when performance is above the benchmark (being the RBA Cash Rate).	Section 9

2. ASIC benchmarks

The Fund is a 'hedge fund' for the purposes of Australian Securities and Investments Commission ("ASIC") Regulatory Guide 240 ("RG 240"). The following table and the tables in Sections 1 and 3 set out a summary of the disclosure ASIC requires for hedge funds, the key features of the Fund and a guide to where more detailed information can be found in this PDS. A copy of RG 240 dated October 2013 (as may be amended, supplemented or replaced from time to time) is available from www.asic.gov.au.

The information summarised in the relevant tables and explained in detail in the identified section reference is intended to assist investors with analysing the risks of investing in the Fund. Investors should consider this information together with the detailed explanation of various benchmarks and principles referenced throughout this PDS and the key risks of investing in the Fund highlighted in Section 6 of this PDS.

ASIC Benchmark	Is the benchmark satisfied?	Summary	For further information
Benchmark 1: Valuation of assets			
This benchmark addresses whether valuations of the Fund's non-exchange traded assets are provided by an independent administrator or an independent valuation service provider.	Yes	<p>Equity Trustees has appointed an independent administrator, Mainstream Fund Services Pty Ltd, to provide administration services for the Fund, including valuation services.</p> <p>The Fund satisfies Benchmark 1 by having its non-exchange traded assets independently valued by the Administrator in accordance with its pricing policy.</p> <p>Over-the-counter ("OTC") derivatives are generally valued by reference to the counterparty settlement price which is based upon broad financial market indices.</p>	Section 5
Benchmark 2: Periodic reporting			
This benchmark addresses whether the Responsible Entity of the Fund will provide periodic disclosure of certain key information specified by ASIC on an annual and monthly basis.	Yes	The Responsible Entity will provide periodic disclosure of certain key information on an annual and monthly basis.	Section 8

3. ASIC disclosure principles

	Summary	Section (for further information)
<i>Investment strategy</i>	<p>The Investment Manager intends to target superior risk adjusted returns for its investors. It does this by investing in situations whereby it perceives that the reward on offer is outsized relative to the risk involved in establishing a position.</p> <p>Historically, the Investment Manager has found many such opportunities have existed within the 'event' space and as such regularly invests in merger arbitrage situations, along with select capital raisings and other corporate actions. Past performance is not indicative of future performance.</p> <p>The Fund utilises a variety of instruments to achieve its investment outcomes including Australian and international equities, derivatives and CFDs. Derivative instruments (including CFDs) are used to gain an intended exposure or manage a particular risk.</p>	Sections 5.2, 5.4, 5.6, 5.7, 5.8 and 6
<i>Investment manager</i>	<p>Equity Trustees Limited, as Responsible Entity of the Fund, has appointed Harvest Lane Asset Management Pty Ltd as the Investment Manager of the Fund.</p> <p>See Section 4 in relation to the expertise of the Investment Manager and the Investment Management Agreement under which the Investment Manager has been appointed.</p> <p>Under the Investment Management Agreement between the Investment Manager and Equity Trustees, Equity Trustees can terminate the Investment Manager's appointment where the Investment Manager becomes insolvent, materially breaches the agreement, ceases to carry on its business or in certain other circumstances. In the event that Equity Trustees terminates the Investment Manager following one of these events, the Investment Manager's appointment would cease upon any termination date specified in the notice, and the Investment Manager would be entitled to receive fees in accordance with the agreement until the effective date of termination.</p>	Section 4
<i>Fund structure</i>	<p>The Fund is an Australian unit trust registered under the Corporations Act as a managed investment scheme.</p> <p>The responsible entity of the Fund is Equity Trustees Limited. Equity Trustees Limited may appoint service providers to assist in the ongoing operation, management and administration of the Fund.</p> <p>The key service providers to the Fund are:</p> <ul style="list-style-type: none"> • Harvest Lane Asset Management Pty Ltd, the investment manager of the Fund; • Mainstream Fund Services, the administrator of the assets of the Fund; and • JP Morgan, the prime broker and custodian of the assets of the Fund. <p>See Section 5.3 for further information on other key service providers, Equity Trustees' role in monitoring the performance of service providers and a diagram of the flow of funds through the Fund.</p>	Sections 4, 5.3 and 6
<i>Valuation, location and custody of assets</i>	<p>Mainstream Fund Services is the administrator of the Fund and provides administrative, accounting, registry and transfer agency services. The Administrator is responsible for calculating the Fund's NAV.</p> <p>JP Morgan is the custodian and provides custodial services.</p> <p>See section 5.4 for further information on the custodial arrangements and the geographical location of the Fund's assets.</p>	Sections 4, 5.2 and 5.4

	Summary	Section (for further information)
<i>Liquidity</i>	<p>The Fund permits redemptions each Business Day.</p> <p>Ultimate liquidity will depend on the securities and derivatives which the Fund will hold. The Responsible Entity and Investment Manager reasonably expect that the Fund will be able to realise at least 80% of the Fund's assets, at the value ascribed to those assets in the most recent calculation of the NAV of the Fund, within 10 days.</p> <p>The constitution of the Fund and the Corporations Act permit deferral of redemptions in certain circumstances. Please refer to the Section 7 for further information. If redemptions are deferred, Mainstream may in its discretion pro rata each redemption request to ensure that only 20% of the net asset value of the Fund is redeemed and may defer the residual redemption requests in excess of that amount by treating them as though they were received for the next relevant redemption period (subject again to the 20% restriction for that redemption day).</p>	Sections 5.5 and 7
<i>Leverage</i>	The Fund may be leveraged through the use of derivatives and some borrowing. The Fund will typically operate with gross leverage of less than 2.0x the net asset value of the Fund and Harvest Lane seeks to ensure that gross leverage remains below 4.0x of net asset value at all times.	Sections 5.6 and 6
<i>Derivatives</i>	The Fund will invest in derivatives to gain an intended exposure or manage a particular risk. For key risks to the Fund associated with the collateral requirements of the derivative counterparties, please see Section 6.	Sections 5.7 and 6
<i>Short selling</i>	The Fund does not currently engage in short selling physical securities but may do so in future. However, presently, short positions are obtained synthetically using CFDs.	Sections 5.8 and 6
<i>Withdrawals</i>	<p>Each Business Day.</p> <p>Withdrawal requests must be received by 4pm on any Business Day to receive that day's unit price.</p> <p>See Section 7 for more information on making a withdrawal.</p>	Sections 5.9 and 7

4. Who is managing the Fund?

The Responsible Entity

Equity Trustees Limited

Equity Trustees Limited ABN 46 004 031 298 AFSL 240975, a subsidiary of EQT Holdings Limited ABN 22 607 797 615, which is a public company listed on the Australian Securities Exchange (ASX: EQT), is the Fund's responsible entity and issuer of this PDS. Established as a trustee and executorial service provider by a special Act of the Victorian Parliament in 1888, today Equity Trustees is a dynamic financial services institution which continues to grow the breadth and quality of products and services on offer.

Equity Trustees' responsibilities and obligations as the Fund's responsible entity are governed by the Fund's constitution ("Constitution"), the Corporations Act and general trust law. Equity Trustees has appointed Harvest Lane Asset Management Pty Ltd as the investment manager of the Fund. Equity Trustees has appointed a custodian to hold the assets of the Fund. The custodian has no supervisory role in relation to the operation of the Fund and is not responsible for protecting your interests.

The Investment Manager

Harvest Lane Asset Management Pty Ltd

Harvest Lane is the investment manager for the Fund. Harvest Lane is an Australian incorporated company owned by its staff.

Harvest Lane has signed an investment management agreement, which is in an industry standard format and provides for termination of the Investment Manager in a number of circumstances including where the Investment Manager becomes insolvent, materially breaches the agreement, ceases to carry on its business or in certain other circumstances. There are no penalty payouts in the event the investment management agreement is terminated. There are no unusual or onerous (from an investor's perspective) terms in the investment management agreement. There have been no adverse regulatory findings against Harvest Lane or its personnel.

The key investment personnel who have day to day responsibility for the running of the Fund are:

Luke Cummings, Chief Investment Officer & Managing Director

Luke is Lead Portfolio Manager at Harvest Lane Asset Management. Luke has 19 years' experience trading Australian and international equity markets on both a proprietary basis and on behalf of retail and wholesale clients.

In 2006, Luke co-founded and was Managing Director of successful private client broking and advisory firm HC Securities. Under Luke's leadership, HC Securities championed performance based brokerage, developed numerous successful trading strategies, and reviewed and underwrote select corporate offerings.

Luke previously worked at ETRADE Australia (since acquired by ANZ) where he was the equities dealing manager. In this role, Luke was responsible for the entire retail dealing function. Luke commenced his career at Platinum Asset Management.

Luke has a Bachelor of Commerce from Macquarie University and numerous industry qualifications.

Andrew Salvestrin, Portfolio Manager

At Harvest Lane Asset Management, Andrew develops and manages the firm's proprietary trading systems. Andrew has 17 years' experience trading international equity and derivative markets on both a proprietary basis and on behalf of retail and wholesale clients.

In 2006, Andrew co-founded and was a Director and Senior Private Client Advisor at HC Securities. Andrew helped develop and educate clients on numerous successful trading strategies and reviewed corporate offerings.

Andrew subsequently worked as a successful proprietary trader for four years before joining Harvest Lane Asset Management in 2013.

Andrew was formerly an Information Systems Technician. He has numerous industry qualifications in financial services including being an Accredited Derivatives Advisor.

Rod Harper, Portfolio Manager

Rod co-founded Harvest Lane Asset Management and is responsible for developing and managing the firm's proprietary trading systems and assisting with the management of operations. Rod has 20 years' experience trading Australian and international equities and derivatives on both a proprietary basis and on behalf of retail and wholesale clients.

In 2006, Rod co-founded and was a Director and Senior Private Client Advisor at HC Securities. Rod oversaw the firm's policies and procedures and helped develop and educate clients on numerous successful trading strategies, including reviewing select corporate offerings.

Rod has a Bachelor of Commerce from Macquarie University and numerous industry qualifications.

Chad Burgess, Operations Manager

Chad is responsible for the day-to-day operations of Harvest Lane Asset Management. Chad has over 12 years' experience in both Australian and international financial markets.

Chad started his career at OptionsXpress providing trading support and execution services to retail and wholesale clients. Chad subsequently worked at HC Securities as a Private Client Advisor where he continued to mentor and support new and existing clients. Chad was instrumental in creating a night desk where he provided trade execution for various trading strategies targeted at the US Equity, FX and Futures markets.

Having met the founders of Harvest Lane Asset Management during his time at HC Securities, Chad joined the Harvest Lane team in 2014.

As a former Designated Trading Representative, Chad holds a number of industry qualifications as well as a Bachelor of Finance from Newcastle University.

Ben Bailey, Investment Analyst

Ben joined the Harvest Lane Asset Management team in the second half of 2016, specialising in position analysis and fundamental valuation. Ben has several years of financial markets experience and uses his analytical skills and knowledge of the issues that affect company valuations to complement the strategies employed by Harvest Lane Asset Management.

Ben holds a Bachelor of Business (Economics and Marketing) from University of Technology, Sydney.

It is anticipated that the investment team will spend 100% of their time executing the Fund's investment strategy.

The Administrator

Mainstream Fund Services Pty Ltd

The Responsible Entity has appointed Mainstream Fund Services ("Mainstream") to act as administrator for the Fund. In this capacity, the Administrator performs all general administrative tasks for the Fund, including keeping financial books and records and calculating the Net Asset Value of the Fund.

The Responsible Entity has entered into an administration agreement with the Administrator, which governs the services that will be provided by the Administrator.

The Investment Manager may at any time, in consultation with the Responsible Entity, select any other administrator to serve as administrator to the Fund.

The Custodian

J.P. Morgan Securities plc

J.P. Morgan Securities plc ("JPMS plc") has been appointed to provide prime brokerage services, including custody, margin financing and stock lending, with respect to the Fund's

securities. The Responsible Entity may at any time, in consultation with the Investment Manager, select any other custodian and administrator to serve as custodian and administrator to the Fund.

5. How the Fund invests

5.1 Investment Objective

The Fund's intention is to deliver consistent positive rates of return. The Fund invests selectively when the potential exists to generate outsized rewards relative to the risk being incurred.

The Fund does not track an index and nor is the Fund compelled to be fully or partially invested in the event that Harvest Lane Asset Management Pty Ltd is unable to identify sufficiently attractive opportunities.

There is no guarantee that the Fund's investment objective will be achieved. The investment objective is not intended to be a forecast. It is merely an indication of what the Fund aims to achieve over the medium to long term. The Fund may not be successful in meeting this objective. Returns are not guaranteed.

5.2. Investment Strategy

The Investment Manager intends to target superior risk adjusted returns for its investors. It does this by investing in situations whereby it perceives that the reward on offer is outsized relative to the risk involved in establishing a position.

Historically, the Investment Manager has found many such opportunities have existed within the 'event' space and as such regularly invests in merger arbitrage situations, along with select capital raisings and other corporate actions. Past performance is not indicative of future performance.

The Fund utilises a variety of instruments to achieve its investment outcomes including Australian and international equities, derivatives and CFDs. Derivative instruments (including CFDs) are used to gain an intended exposure or manage a particular risk.

Generating returns

Rather than employing a particular style (deep value, growth etc.) Harvest Lane employs a variety of styles to achieve the Fund's stated investment objective, namely to generate a positive return on capital employed regardless of underlying market and economic conditions.

The Fund does not track an index and nor is it required to be fully or partially invested in the event that Harvest Lane is unable to identify sufficiently attractive opportunities. Returns are not guaranteed.

Managing and mitigating market risk

The Fund manages market risk by aiming to be relatively market-neutral at all times.

This is done by choosing, or in some instances manufacturing, positions whose value is affected by something other than movements in the broader market. Put another way, the Fund will have low correlation with the broader market index (as well as typically having low sensitivity to market movements).

An example of a position where low correlation is naturally occurring would be when a stock is the subject of an unconditional takeover offer which market participants are expecting will successfully complete in the coming weeks. In such an instance, the stock that is being acquired should trade at (or close to) the price at which the takeover has been agreed irrespective of the performance of the broader market, as the stock's future value is already known and is no longer influenced by external factors.

On occasion the Fund can manufacture 'low correlation' by entering into one or more offsetting (or hedge) transactions against existing positions that would otherwise be highly dependent on market movements ('high correlation'). This would generally involve the Fund taking a short position by way of a CFD.

Portfolio leverage

When the Fund acquires a derivative position, the notional exposure of the derivative is generally a multiple of the amount paid for it. Having a number of derivative positions leverages the initial investment made by the investor. At times the Fund may borrow money to increase the amount that can be invested. For example, if the Fund holds \$100 of investor capital, and invests \$100 in shares and acquires derivatives with aggregate exposure of \$100, it would have the following characteristics:

- investor capital and net assets of \$100
- gross exposure of \$200 (\$100 shares + \$100 derivatives)
- net exposure of \$0 (\$100 shares - \$100 derivatives, assuming they are all short positions)
- gross leverage of 2.0x (gross exposure of \$200 / investor capital of \$100)

The Fund will typically operate with gross leverage of no more than 2.0x the net asset value of the Fund and Harvest Lane will seek to ensure that gross leverage remains below 4.0x the net asset value of the Fund at all times. Please refer to Section 5.6 for more information and Section 6 for information on the risks associated with leverage.

Diversification and position limits

Harvest Lane seeks to ensure that:

- no one position (defined as exposure to the same group) risks more than 5% of the Fund's capital when the position is established. This can increase to no more than 10% over the life of the investment (although it will typically be much less than 10%). Importantly, please note that none of these risk measures and limits mean that your monies are capital protected in any way
- no more than 20% of the portfolio will be invested in any one position
- net exposure of the Fund (long positions less short positions) is generally between 50% and 200% of the net asset value of the Fund and

the Fund will generally hold up to 40 long positions and up to 10 short positions. Please refer to "CFD risk" in Section 6.

Note that at times the Fund may be fully invested in cash.

The above position limits are generally measured at the time of acquisition of an investment by the Fund.

The Fund will invest in listed equities and derivatives, as well as cash. Harvest Lane may, in its discretion, invest in derivatives to gain an intended exposure or manage a particular risk and may from time to time hold equities that have become unlisted and are in the process of liquidation.

Broadly, the asset classes, asset allocation ranges of the Fund are as follows:

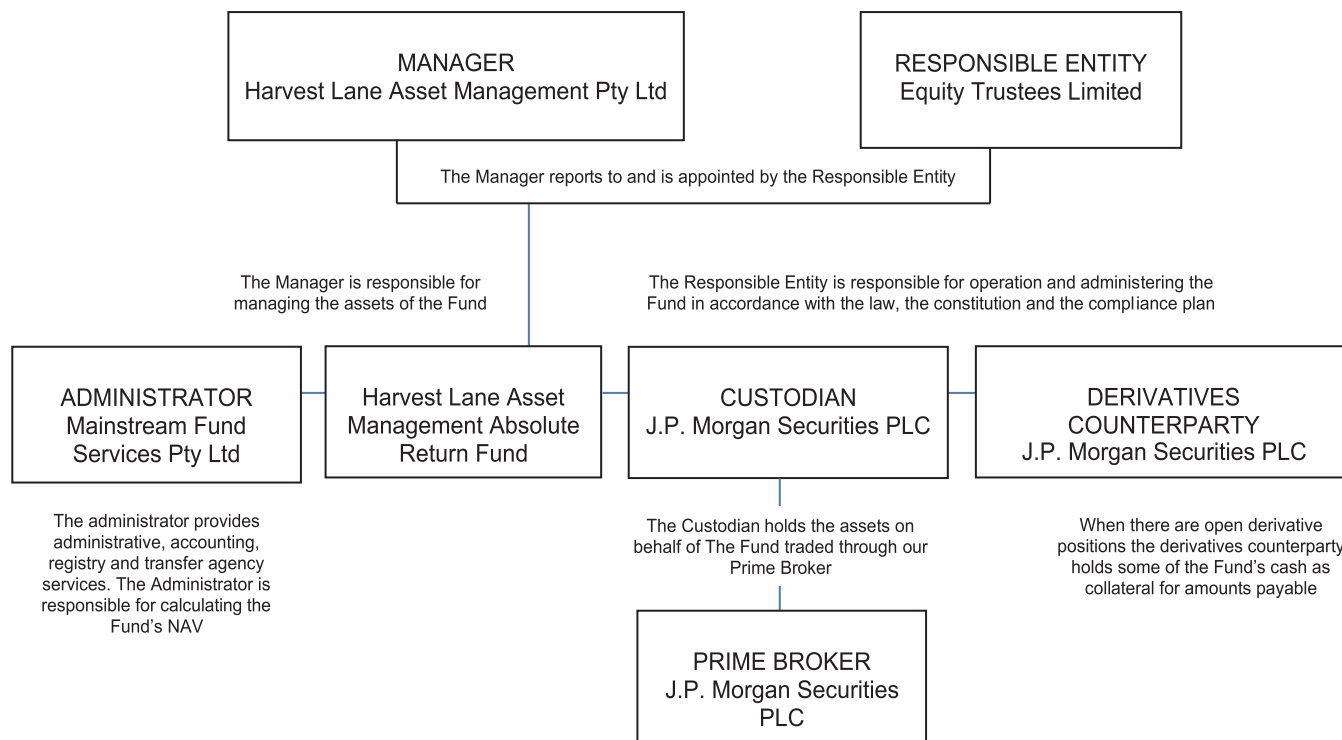
Asset class	Range
Australian Listed Equities	0-100%
International Equities	0-20%
Exchange Traded Derivatives	0-20%
OTC Derivatives	0-20%
Cash and Cash Equivalents	0-100%
Australian Unlisted Equities	0-10%

The investment strategy, and the other limits set out in this PDS, should be viewed as objectives only and not absolute limits. Should they be exceeded for any reason, for example due to market movements or cash flows, Harvest Lane will endeavour to effect such adjustments as are necessary to meet the limits set out in this PDS.

If the investment program changes significantly, you will be given at least 30 days' notice where practicable.

5.3. Fund Structure

The Fund is a registered managed investment scheme. Investors in the Fund will receive units when they invest through the PDS. The investment structure chart below shows a summary of the key entities and the investment flows between the Investors and the Fund.



Each of the above entities is based in Australia, with the exception of the Custodian, Prime Broker and Derivatives Counterparty. All service providers are appointed on arm's length, commercial terms.

Equity Trustees ensures compliance of its service providers with their obligations under the relevant service agreements and applicable laws by monitoring performance, and by conducting on-site visits where practicable.

Service providers to the Fund may change without prior notice to investors. Risks relating to the use of third-party service providers, as well as the significant risks associated with an investment in the Fund, are outlined in Section 6.

5.4. Valuation, location and custody of assets

Below is a table summarising the Fund's assets, location of assets and custody arrangements.

Assets	Location of assets	Custody
Listed equities, some derivatives and some cash	Australia and some assets in the UK and USA from time to time	J.P. Morgan Securities PLC as custodian may hold cash as collateral for derivative positions

See Section 5.2 for the asset allocation ranges.

Units in the Fund are valued each Business Day and the net asset value is established as per the constitution of the Fund and in accordance with industry standards. Exchange traded assets are valued using their market price. For over the counter derivatives, the counterparty calculates their price.

5.5. Liquidity

The Fund permits redemptions each Business Day.

Ultimate liquidity will depend on the securities and derivatives which the Fund will hold. It is expected that the Fund will be able to meet redemptions in normal market conditions. In a rapidly moving market investors could experience a deferral or scaling back to a partial payment of their redemption plus a deferral of the outstanding amount.

The constitution of the Fund and the Corporations Act permit deferral of redemptions in certain circumstances. Please refer to the Section 7 for further information. If redemptions are deferred, Mainstream may in its discretion pro rata each redemption request to ensure that only 20% of the net asset value of the Fund is redeemed and may defer the residual redemption requests in excess of that amount by treating them as though they were received for the next relevant redemption period (subject again to the 20% restriction for that redemption day).

5.6. Leverage

The Fund may be leveraged through the use of derivatives and some borrowing. The Fund will typically operate with gross leverage of less than 2.0x the net asset value of the Fund and Harvest Lane seeks to ensure that gross leverage remains below 4.0x of net asset value at all times.

The following table provides examples of two different scenarios of the Fund's performance and their theoretical outcome if the Fund was at its maximum gross market exposure (4.0x) with no protection through short selling. Note that this example does not take into account borrowing or trading costs. The example uses the minimum investment of \$5,000:

Return on securities	Total gross portfolio exposure	Total portfolio gain/(loss)	Total portfolio value
Portfolio return +10%	\$20,000	\$2,000	\$7,000
Portfolio return -10%	\$20,000	(\$2,000)	\$3,000

Please see Section 5.3 for information on the Fund's leverage providers as well as Section 6 for information on the risks associated with leverage and derivatives

5.7. Derivatives

The Fund will invest in derivatives to gain an intended exposure or manage a particular risk.

Derivatives (both exchange traded and over the counter) may be used in the management of the Fund for purposes including the following:

- creating short exposure to a stock, security or market where permitted
- managing investment risk and volatility of a stock, security or market
- achieving asset exposures without buying or selling the underlying securities
- generating additional income
- adding to the Fund's gearing levels
- managing strategic and tactical asset allocation strategies and
- taking advantage of price differences (known as arbitrage).

Please see Section 6 for information on the risks associated with leverage and derivatives.

5.8. Short Selling

The Fund does not currently engage in short selling physical securities but may do so in future. However, presently, short positions are obtained synthetically using CFDs.

5.9. Withdrawals

The Fund processes withdrawals each Business Day. Withdrawal requests are required to be received by 4.00 p.m. Sydney time for processing on that Business Day.

The process for making withdrawals and limitations in relation to withdrawals are set out in the Section 7. In some circumstances, such as when the Fund is illiquid, investors will not be able to withdraw from the Fund. If the withdrawal requirements are altered, you will be notified in writing. Please also refer to the Section "Liquidity risk" in Section 6 for more information on liquidity.

5.10. Suggested investment timeframe

At least 5 years.

5.11. Labour standards and environmental, social and ethical considerations

Believing these factors to be subjective and extremely personal, Harvest Lane does not take into account labour standards or environmental, social or ethical considerations in the selection, retention or realisation of investments of the Fund.

5.12. Fund performance

For the most recent Fund performance, and more detailed historical performance, please call Harvest Lane on 1300 419 420 or visit the following website: www.harvestlaneam.com.au.

Past performance is not indicative of future performance.

The Responsible Entity and Investment Manager do not guarantee the success, repayment of capital or any rate of return on income or capital or the investment performance of the Fund.

5.13. Significant benefits of investing in the Fund

Access to Harvest Lane's investment expertise

Managed funds pool investor money in one place, and the professionals who manage the Fund use their resources, experience and expertise to make the investment decisions. Harvest Lane is the investment manager of the Fund, and when you invest in the Fund you may benefit from its investing experience and expertise.

Long term horizon

Because returns may be volatile and some positions illiquid, the Fund wishes to attract investors with a long investment horizon (we recommend a minimum investment horizon of five years). If you are an investor with a long term horizon this approach may benefit you.

Recommended to be part of a diverse portfolio

The Fund may at times be invested in a small number of select opportunities. Returns could be volatile and we therefore recommend an investment in the Fund forms part of a wider diverse portfolio.

As part of a wider portfolio the Fund may offer diversification benefits through its exposure to short positions and specific trading opportunities.

Fee structure

Managed funds can often invest for less cost than ordinary investors. The Fund charges a management fee and ordinary recoverable expenses of up to 1.25% pa. A 25% performance fee is payable when performance is above the benchmark (being the RBA Cash Rate). Fees can have a significant impact on your investment returns over time, please see "Fees and other costs" in Section 9 for details.

Investing in the Fund may deliver additional benefits that cannot solely be captured by the increase in the Fund's unit price. In certain circumstances, the Fund may invest in situations whereby it is entitled to franking credits that will ultimately be available for distribution to investors in the Fund. Subject to the individual circumstance of each investor, these franking credits may have the effect of boosting an investor's after tax returns (either by reducing tax payable or increasing the amount of any tax refund). Investors do not pay any additional fees in conjunction with the receipt of these credits.

Please note, returns are not guaranteed, but will reflect the outcomes of Harvest Lane's success (or otherwise) in identifying and taking advantage of market opportunities. Please refer to the "Managing risk" in Section 6 for more information.

6. Managing risk

All investments carry risks. Different investment strategies may carry different levels of risk, depending on the assets acquired under the strategy. Assets with the highest long-term returns may also carry the highest level of short-term risk. The significant risks below should be considered in light of your risk profile when deciding whether to invest in the Fund. Your risk profile will vary depending on a range of factors, including your age, the investment time frame (how long you wish to invest for), your other investments or assets and your risk tolerance.

The Responsible Entity and the Investment Manager do not guarantee the liquidity of the Fund's investments, repayment of capital or any rate of return or the Fund's investment performance. The value of the Fund's investments will vary. Returns are not guaranteed and you may lose money by investing in the Fund. The level of returns will vary and future returns may differ from past returns. Laws affecting managed investment schemes may change in the future. The structure and administration of the Fund is also subject to change.

In addition, we do not offer advice that takes into account your personal financial situation, including advice about whether the Fund is suitable for your circumstances. If you require personal financial or taxation advice, you should contact a licensed financial adviser and/or taxation adviser.

Key Risks

CFD risk

The Fund will often use CFDs in lieu of short-selling. A short CFD position allows the investor to profit from declines in market prices to the extent such declines exceed the transaction costs. A short CFD creates the risk of an unlimited loss, as the price of the underlying security could theoretically increase without limit, thus increasing the cost of buying those securities to cover the short position. Closing out CFDs depends on the counterparty agreeing to enter into an offsetting transaction. Although to date counterparties generally agree to do so, there is a possibility that in a very volatile market they may not. The Investment Manager can reduce or eliminate this risk by purchasing shares (in the case of shorts) or entering into an offsetting transaction with another provider in the case of other types of CFDs.

Concentration risk

The Fund will have holdings in ASX listed equities across a range of market sectors. The Fund may also invest in international equities. However, the Fund intends to typically hold up to 40 long positions and offset these with up to 10 short positions. The Fund's portfolio therefore will be more concentrated in its holdings than other managed funds. This may cause the value of the investments to be more affected by any single adverse economic, political or regulatory event or the outcome of any particular situation or transaction affecting the company, such as a takeover, than the investments of a more diversified investment portfolio.

Counterparty risk

The Fund is subject to the risk that the counterparty to a transaction or contract (such as the issuer of CFDs) may default on their obligations and as a result, experience an adverse investment outcome or liability.

The Fund will trade CFDs with various counterparties and will deposit cash from the Fund with them to fund margin calls. Therefore, there is a risk that if a CFD counterparty becomes insolvent whilst the Fund remains indebted to it, the assets of the Fund may not be returned in full. We manage this risk by

limiting the amount of the Fund's assets that can be deposited as margin and having limits on gross and net exposure and leverage within the Fund as well as on individual position size limits.

Currency risk

Units in the Fund will be issued and redeemed in AUD. The Fund's assets may be invested in investments denominated in currencies other than AUD. There is a risk that investments can fall in value due to adverse currency movements. The Fund will have some exposure to currency risk when it holds international investments and domestic investments that are impacted by currency movements.

Cyber risk

There is a risk of fraud, data loss, business disruption or damage to the information of the Fund or to investors' personal information as a result of a threat or failure to protect the information or personal data stored within the IT systems and networks of Mainstream or other service providers.

Derivatives risk

The Fund will from time to time use other derivative instruments in addition to CFDs (see above). The use of derivative instruments involves a variety of material risks including the high degree of leverage often embedded in such instruments. Other risks include the possibility that a derivative position is difficult or costly to close out, there is an adverse movement in the asset or the index underlying a derivative, and the risk that the counterparty to a derivative contract fails to perform its obligations under the contract.

Derivative risks include:

- derivative valuations may not move in line with the underlying asset
- potential illiquidity of the derivative
- lack of capacity of the Fund to meet payment obligations as they arise and
- counterparties not meeting their obligations.

Although not all of these risks can be eliminated, Harvest Lane manages these risks as far as practicable by:

- monitoring the Fund's derivative exposures
- ensuring the Fund can meet all of its derivative obligations
- using reputable counterparties and
- limiting the Fund's gross and net exposure, as well as its leverage and having individual position limits.

Distribution risk

The Fund will generally distribute available income annually (as at 30 June). However, the amount of any distribution may vary significantly from year to year, and no distribution may be paid in years when the Fund does not have available income. An investment in the Fund may therefore not be suitable for investors seeking a regular income stream for financial or tax planning purposes. Further information regarding taxation matters can be found in "Taxation" in Section 10 of this PDS.

Fund risk

Risks particular to the Fund include that it could terminate (for example, at a date we decide), the fees and expenses could change (although we would always give you at least 30 days' notice if fees were to increase), we could be replaced as responsible entity of the Fund and our management and staff could change.

There is also a risk that investing in the Fund may give different results than investing individually because of income or capital gains accrued in the Fund and the consequences of investment and withdrawal by other investors.

Individual investment risk

Investments made by the Fund, like shares on the ASX and derivatives positions can (and do) rise and fall in value for many reasons; such as changes in a company's internal operations or management, or in its business environment. Harvest Lane manages the Fund in order to profit from particular circumstances such as a takeover offer and as noted above, the portfolio is relatively concentrated. The Fund can borrow and use derivatives. All these factors can increase individual investment risk for a period of time.

Interest rate risk

This is the risk that capital value or income of a security may be adversely affected when interest rates rise or fall.

Investment manager risk

Investment managers can be wound up or liquidated, they can cease to manage the relevant fund and be replaced, their investment methodology can change, they can poorly manage operational risks and their funds can perform poorly.

Further, only a small number of investment professionals are responsible for managing the Fund and their personal circumstances can change.

If any of these events occurred in respect of Harvest Lane, Equity Trustees would do all things reasonably practicable to recover the value of the investments and seek a new investment manager or program, with a similar investment profile if thought appropriate. If the investment program changed significantly, you would be given at least 30 days' notice where practicable.

Leverage risk

Harvest Lane will use leverage with derivatives which will enable it to make investments with a face value in excess of its equity. It will also borrow money and gear the Fund in order to purchase shares when a market opportunity arises. The use of leverage increases both investment opportunity and investment risk. For example, as a result of using leverage, the net asset value of the Fund will increase more when the Fund's assets increase in value, and decrease more when the Fund's assets decrease in value, than would otherwise be the case if leverage was not used.

The use of leverage levels is strictly controlled by limiting the Fund's gross and net exposure, as well as its leverage in absolute terms and by having individual position limits.

When CFDs and other derivatives are traded, they may be entered into by depositing only a percentage of the CFD or derivative's face value and borrowing the remainder (margin). As a result, a relatively small adverse price movement in a CFD or a derivative's value may result in immediate and substantial losses to the investor. Like other leveraged investments, any purchase or sale of a CFD or other derivative on margin may result in losses in excess of the amount invested.

The interest expense and other costs incurred in connection with any borrowing may not be recovered by appreciation in the investments purchased. The Fund may be subject to additional

risks, including the possibility of a "margin call", pursuant to which the Fund must either deposit additional funds with the counterparty or lender or suffer mandatory liquidation of the position to compensate for the decline in value. In the event of a sudden, precipitous drop in the value of the Fund's assets, the Fund might not be able to liquidate assets quickly enough to pay off its margin debt. Such an event would adversely affect the Fund's investments.

Further, when the Fund borrows money or enters into derivatives, the counterparty or lender may be entitled to take collateral from the assets of the Fund. When this happens, the Custodian for the Fund no longer holds the legal title to the assets. Any assets taken by the counterparty or lender may be used by the counterparty or lender for their own purposes (including lending those assets to third parties) for the period that the Fund retains the relevant liability. Therefore, there is a risk that if the counterparty or lender becomes insolvent whilst the Fund remains indebted to the counterparty or lender, the assets of the Fund may not be returned in full.

Liquidity risk

There are circumstances under which access to your money may be delayed – these are discussed under the heading "Access to funds" in Section 7. Further, the level of overall market liquidity is an important factor that may contribute to the profitability of the Fund and access to your money. Illiquid markets can make it difficult to trade profitably and to realise assets in a timely fashion to meet withdrawal requests.

Also note that units in the Fund are not quoted on any stock exchange so you cannot sell them through a stockbroker.

Market risk

Economic, technological, political or legal conditions, interest rates and even market sentiment, can (and do) change, and changes in the value of investment markets can affect the value of the investments in unpredictable ways.

Regulatory risk

Changes in applicable laws and policies (including taxation policies, regulations and laws affecting managed investment schemes or changes in generally accepted accounting policies or valuation methods) in Australia or in any jurisdiction in which the Fund invests may adversely affect the Fund. Changes in political situations and changes to foreign and domestic tax positions can also impact on the Fund.

The Australian taxation consequences of an investment in the Fund, detailed under the heading "Taxation" in Section 10, have been based on taxation legislation as at the date of this PDS.

Future changes in Australian tax legislation or in the interpretation of that legislation may adversely affect the tax treatment of the Fund, or of the investors or the tax treatment of a specific investment of the Fund. To the extent the Fund invests in international equities, then future changes in non-Australian tax legislation may affect the tax treatment of the Fund, its investments and the distributions of profits. Such changes may have an impact on the value of your investment in the Fund.

7. Investing and withdrawing

Applying for units

You can acquire units by completing the Application Form that accompanies this PDS. The minimum initial investment amount for the Fund is \$5,000.

Completed Application Forms should be sent along with your identification documents (if applicable) to:

Mainstream Fund Services Pty Ltd
Unit Registry
GPO Box 4968
Sydney, NSW, 2001

Please note that cash cannot be accepted.

You can apply using BPAY®, direct credit and direct debit payment options.

We reserve the right to accept or reject applications in whole or in part at our discretion. We have the discretion to delay processing applications where we believe this to be in the best interest of the Fund's investors.

The price at which units are acquired is determined in accordance with the Constitution ("Application Price"). The Application Price on a Business Day is, in general terms, equal to the Net Asset Value ("NAV") of the Fund, divided by the number of units on issue and adjusted for transaction costs ("Buy Spread"). At the date of this PDS, the Buy Spread is 0.25%.

The Application Price will vary as the market value of assets in the Fund rises or falls.

Application cut-off times

If we receive a correctly completed Application Form, identification documents (if applicable) and cleared application money:

- before or at 4pm (Sydney time) on a Business Day and your application for units is accepted, you will receive the Application Price calculated for that Business Day; or
- after 4pm (Sydney time) on a Business Day and your application for units is accepted, you will receive the Application Price calculated for the next Business Day.

We will only start processing an application if:

- we consider that you have correctly completed the Application Form;
- you have provided us with the relevant identification documents if required; and
- we have received the application money (in cleared funds) stated in your Application Form.

We reserve the right to accept or reject applications in whole or in part at our discretion. We have the discretion to delay processing applications where we believe this to be in the best interest of the Fund's investors.

Additional applications

You can make additional investments into the Fund at any time by sending us your additional investment amount together with a completed Application Form. The minimum additional investment into the Fund is \$1,000.

You can also invest via direct debit on a monthly basis using the savings plan. The minimum monthly savings plan investment into the Fund is \$100 per month.

Terms and conditions for applications

Applications can be made at any time. Application cut-off times and unit pricing are set out in the initial applications section above.

Please note that we do not pay interest on application monies (any interest is retained and credited to the Fund).

Equity Trustees reserves the right to refuse any application without giving a reason. If for any reason Equity Trustees refuses or is unable to process your application to invest in the Fund, Equity Trustees will return your application money to you, subject to regulatory considerations, less any taxes or bank fees in connection with the application. You will not be entitled to any interest on your application money in this circumstance.

Under the Anti-Money Laundering and Counter-Terrorism Financing Act 2006, applications made without providing all the information and supporting identification documentation requested on the Application Form cannot be processed until all the necessary information has been provided. As a result, delays in processing your application may occur.

Cooling-off period

If you are a Retail Client who has invested directly in the Fund, you may have a right to a 'cooling off' period in relation to your investment in the Fund for 14 days from the earlier of:

- confirmation of the investment being received; and
- the end of the fifth business day after the units are issued.

A Retail Client may exercise this right by notifying Equity Trustees in writing. A Retail Client is entitled to a refund of their investment adjusted for any increase or decrease in the relevant Application Price between the time we process your application and the time we receive the notification from you, as well as any other tax and other reasonable administrative expenses and transaction costs associated with the acquisition and termination of the investment.

The right of a Retail Client to cool off does not apply in certain limited situations, such as if the issue is made under a distribution reinvestment plan, switching facility or represents additional contributions required under an existing agreement. Also, the right to cool off does not apply to you if you choose to exercise your rights or powers as a unit holder in the Fund during the 14 day period. This could include selling part of your investment or switching it to another product.

Indirect Investors should seek advice from their IDPS Operator as to whether cooling off rights apply to an investment in the Fund by the IDPS. The right to cool off in relation to the Fund is not directly available to an Indirect Investor. This is because an Indirect Investor does not acquire the rights of a unit holder in the Fund except in relation to access to Equity Trustee's complaints resolution process (see Section 8). Rather, an Indirect Investor directs the IDPS Operator to arrange for their monies to be invested in the Fund on their behalf. The terms and conditions of the IDPS Guide or similar type document will govern an Indirect Investor's investment in relation to the Fund and any rights an Indirect Investor may have in this regard.

Making a withdrawal

Investors in the Fund can generally withdraw their investment by completing a written request to withdraw from the Fund and mailing it to:

Mainstream Fund Services Pty Ltd
Unit Registry
GPO Box 4968
Sydney, NSW, 2001

Or sending it by fax to +61 8244 1916

The minimum withdrawal amount is \$1,000. Once we receive your withdrawal request, we may act on your instruction without further enquiry if the instruction bears your account number or investor details and your (apparent) signature(s), or your authorised signatory's (apparent) signature(s).

Equity Trustees will generally allow an investor to access their investment within 5 business days of receipt of a withdrawal request by transferring the withdrawal proceeds to such investors' nominated bank account. However, the Constitution allows Equity Trustees to reject withdrawal requests and also to make payment up to 21 days after acceptance of a request (which may be extended in certain circumstances as set out below).

The price at which units are withdrawn is determined in accordance with the Constitution ("Withdrawal Price"). The Withdrawal Price on a Business Day is, in general terms, equal to the NAV of the Fund, divided by the number of units on issue and adjusted for transaction costs ("Sell Spread"). At the date of this PDS, the Sell Spread is 0.25%. The Withdrawal Price will vary as the market value of assets in the Fund rises or falls.

Equity Trustees reserves the right to fully redeem your investment if your investment balance in the Fund falls below \$1,000 as a result of processing your withdrawal request. Equity Trustees can deny a withdrawal request or suspend consideration of a withdrawal request in certain circumstances, including where accepting the request is not in the best interests of investors in the Fund or where the Fund is not liquid (as defined in the Corporations Act). When the Fund is not liquid, an investor can only withdraw when Equity Trustees makes a withdrawal offer to investors in accordance with the Corporations Act. Equity Trustees is not obliged to make such offers.

If you are an Indirect Investor, you need to provide your withdrawal request directly to your IDPS Operator. The time to process a withdrawal request will depend on the particular IDPS Operator and the terms of the IDPS.

Withdrawal cut-off times

If we receive a withdrawal request:

- before 4pm (Sydney time) on a Business Day and your withdrawal request is accepted, you will receive the Withdrawal Price calculated for that Business Day; or
- on or after 4pm (Sydney time) on a Business Day and your withdrawal request is accepted, you will receive the Withdrawal Price calculated for the next Business Day.

We reserve the right to accept or reject withdrawal requests in whole or in part at our discretion. We have the discretion to delay processing withdrawal requests where we believe this to be in the best interest of the Fund's investors.

Access to funds

In certain circumstances we may need to delay withdrawal of your money. We can delay withdrawal of your money for 180 days or such period as considered appropriate in our view in all the circumstances if:

we receive a quantity of withdrawal requests representing more than 20% of the net asset value of the Fund. In this case we can stagger withdrawal payments

something outside our reasonable control affects our ability to properly or fairly calculate the unit price (for example, if the investments are subject to restrictions or if there is material market uncertainty)

a portion of the Fund's assets comprise illiquid assets (that is, assets not readily converted to cash). In this case Equity Trustees can redeem such number of units that correspond to the portion of the Fund's liquid assets (that is, assets readily

converted to cash). For example, if an investor requests redemption of all of their units and the Fund's assets comprise 10% of illiquid assets, Equity Trustees may determine to redeem only 90% of the investor's units. Equity Trustees may redeem the remaining units at such future time, or at times over such period, as it determines

an emergency or similar state of affairs occurs which, in our reasonable opinion, makes it impractical to redeem units or which might be prejudicial to the remaining investors

there is a closure or material restriction on trading on the major global stock exchanges or realisation of the assets cannot be effected at prices which would be obtained if assets were realised in an orderly fashion over a reasonable period in a stable market or

we otherwise consider it is in the best interests of the investors to delay withdrawal of units.

The constitution sets out the full range of circumstances in which we can delay withdrawal of your money.

In certain circumstances we can, or may be required to, also redeem some or all of your units without you asking. These circumstances include:

if you breach your obligations to us (for example, you provide misleading information in your Application Form)

to satisfy any amount of money due to us (as responsible entity or in any other capacity relevant to the Fund) by you

to satisfy any amount of money we (as responsible entity or in any other capacity relevant to the Fund) owe someone else relating to you (for example, to the tax office)

where we suspect that law prohibits you from legally being an investor

if we determine that the Fund is no longer economically viable to continue or the Fund's purpose cannot be achieved or accomplished or

such other circumstance as we determine in our absolute discretion (but we must always act in the best interests of investors as a whole when deciding to do this).

Terms and conditions for withdrawals

The minimum withdrawal amount in the Fund is \$1,000. Where a withdrawal request takes the balance below the minimum level of \$1,000, the Responsible Entity may require you to redeem the remaining balance of your investment. Equity Trustees has the right to change the minimum holding amount.

The Responsible Entity can deny a withdrawal request in whole or in part. Equity Trustees will refuse to comply with any withdrawal request if the requesting party does not satisfactorily identify themselves as the investor. Withdrawal payments will not be made to third parties (including authorised nominees), and will only be paid directly to the investor's bank account held in the name of the investor at a branch of an Australian domiciled bank. By lodging a facsimile or email withdrawal request the investor releases, discharges and agrees to indemnify Equity Trustees from and against any and all losses, liabilities, actions, proceedings, account claims and demands arising from any facsimile or email withdrawal request.

You also agree that any payment made in accordance with the fax or email instructions shall be in complete satisfaction of the obligations of Equity Trustees, notwithstanding any fact or circumstance including that the payment was made without your knowledge or authority.

When you are withdrawing, you should take note of the following:

- We are not responsible or liable if you do not receive, or are late in receiving, any withdrawal money that is paid according to your instructions.
- We may contact you to check your details before processing your withdrawal request. This may cause a delay in finalising payment of your withdrawal money. No interest is payable for any delay in finalising payment of your withdrawal money.
- If we cannot satisfactorily identify you as the withdrawing investor, we may refuse or reject your withdrawal request or payment of your withdrawal proceeds will be delayed. We are not responsible for any loss you consequently suffer.
- As an investor who is withdrawing, you agree that any payment made according to instructions received by post, courier, fax or email, shall be a complete satisfaction of our obligations, despite any fact or circumstances such as the payment being made without your knowledge or authority.

You agree that if the payment is made according to all the terms and conditions for withdrawals set out in this PDS, you and any person claiming through or under you, shall have no claim against Equity Trustees or the Investment Manager in relation to the payment. Investors will be notified of any material change to their withdrawal rights (such as any suspension of their withdrawal rights) in writing.

Distributions

An investor's share of any distributable income is calculated in accordance with the Constitution and is generally based on the number of units held by the investor at the end of the distribution period.

The Fund usually distributes income annually. Distributions are calculated effective the last day of the distribution period and are normally paid to investors as soon as practicable after the distribution calculation date.

Investors in the Fund can indicate a preference to have their distribution:

- reinvested back into the Fund; or
- directly credited to their Australian domiciled bank account.

Investors who do not indicate a preference will have their distributions automatically reinvested. Applications for reinvestment will be taken to be received immediately prior to the next Business Day after the relevant distribution period. There is no Buy Spread on distributions that are reinvested.

In some circumstances, the Constitution may allow for an investor's withdrawal proceeds to be taken to include a component of distributable income.

Indirect Investors should review their IDPS Guide for information on how and when they receive any income distribution.

Valuation of the Fund

The value of the investments of the Fund is generally determined each Business Day. The value of a unit is determined by the Net Asset Value (NAV). This is calculated by deducting from the gross value of the Fund assets the value of the liabilities of the Fund (not including any unitholder liability). Generally, investments will be valued on each Business Day at their market value but other valuation methods and policies may be applied by Equity Trustees if appropriate or if otherwise required by law or applicable accounting standards. The Application Price of a unit in the Fund is based on the NAV

divided by the number of units on issue. The Responsible Entity can also make an allowance for transaction costs required for buying investments when an investor acquires units; this is known as the Buy Spread.

The Withdrawal Price of a unit in the Fund is based on the NAV divided by the number of units on issue. The Responsible Entity can also make an allowance for transaction costs required for selling investments when an investor makes a withdrawal; this is known as the Sell Spread.

The Buy/Sell Spread can be altered by the Responsible Entity at any time and www.harvestlaneam.com.au will be updated as soon as practicable to reflect any change.

Refer to Section 9 for additional information.

Joint account operation

For joint accounts, each signatory must sign withdrawal requests. Please ensure both signatories sign the declaration in the Application Form. Joint accounts will be held as joint tenants.

Authorised signatories

You can appoint a person, partnership or company as your authorised signatory. To do so, please nominate them on the initial Application Form and have them sign the relevant sections. If a company is appointed, the powers extend to any director and officer of the company. If a partnership is appointed, the powers extend to all partners. Such appointments will only be cancelled or changed once we receive written instructions from you to do so.

Once appointed, your authorised signatory has full access to operate your investment account for and on your behalf. This includes the following:

- making additional investments;
- requesting income distribution instructions to be changed;
- withdrawing all or part of your investment;
- changing bank account details;
- enquiring and obtaining copies of the status of your investment; and
- having online account access to your investment.

If you do appoint an authorised signatory:

- you are bound by their acts;
- you release, discharge and indemnify us from and against any losses, liabilities, actions, proceedings, account claims and demands arising from instructions received from your authorised representatives; and
- you agree that any instructions received from your authorised representative shall be complete satisfaction of our obligations, even if the instructions were made without your knowledge or authority.

Electronic instructions

If an investor instructs Equity Trustees by electronic means, such as fax or email, the investor releases Equity Trustees from and indemnifies Equity Trustees against, all losses and liabilities arising from any payment or action Equity Trustees makes based on any instruction (even if not genuine) that Equity Trustees receives by an electronic communication bearing the investor's investor code and which appears to indicate to Equity Trustees that the communication has been provided by the investor e.g. a signature which is apparently the investor's and that of an authorised signatory for the investment or an email address which is apparently the investor's. The investor also agrees that neither they nor anyone claiming through them has any claim against Equity Trustees or the Fund in relation to such payments or actions. There is a risk that a fraudulent

withdrawal request can be made by someone who has access to an investor's investor code and a copy of their signature or email address. Please take care.

BPay®

BPay® is available as a method of payment in the online banking portals of most Australian banks and financial institutions. We recommend that you contact your bank or financial institution to confirm that you can use BPay® to make a payment from your account, or if you are unable to locate BPay® in your online banking portal.

To facilitate the use of this service you will need to use your online banking service from your participating Australian financial institution.

To pay your initial investment via BPay®, you will need the Fund's BPay® Biller code which is listed in the Application Form. You will also need a Customer Reference Number (CRN), you can obtain this by phoning Harvest Lane on 1300 419 420 during office hours.

To increase your investment via BPay® please use the Customer Reference Number (CRN) given to you on confirmation of your initial investment. If you are unable to locate this number, please phone Harvest Lane on 1300 419 420 during office hours for assistance.

Savings Plan

You can increase your investment in the Fund through a monthly direct debit from your nominated bank account. The minimum additional investment for the Fund under the savings plan is \$100 per month. Direct debits will be processed on the 19th calendar day of the month if this is not a business day then the direct debit will be processed on the next occurring business day. See the 'Direct Debit Request Service Agreement' below.

The following is your Direct Debit Service Agreement with Mainstream Fund Services Pty Ltd ABN 81 118 902 891 who acts as the unit registry provider of the Fund. The agreement is designed to explain what your obligations are when undertaking a Direct Debit arrangement with us. It also details what our obligations are to you as your Direct Debit Provider.

We recommend you keep this agreement in a safe place for future reference. It forms part of the terms and conditions of your Direct Debit Request (DDR) and should be read in conjunction with your Direct Debit Request form or additional application form (as applicable).

Definitions

Account means the account held at your financial institution from which we are authorised to arrange for funds to be debited.

Agreement means this Direct Debit Request Service Agreement between you and us.

Banking day means a day other than a Saturday or a Sunday or a public holiday listed throughout Australia.

Debit day means the day that payment by you to us is due.

Debit payment means a particular transaction where a debit is made.

Direct debit request means the Direct Debit Request in the application form or additional application form

Us or we means Mainstream Fund Services, (the Debit User) you have authorised by signing a Direct Debit Request.

You means the customer who has signed or authorised by other means the Direct Debit Request.

Your financial institution means the financial institution nominated by you on the DDR at which the account is maintained.

1. Debiting your account

a) By signing a Direct Debit Request or by providing us with a valid instruction, you have authorised us to arrange for funds to be debited from your account. You should refer to the Direct Debit Request and this agreement for the terms of the arrangement between us and you.

b) We will only arrange for funds to be debited from your account as authorised in the Direct Debit Request or we will only arrange for funds to be debited from your account if we have sent to the address nominated by you in the Direct Debit Request, a billing advice which specifies the amount payable by you to us and when it is due.

c) If the debit day falls on a day that is not a banking day, we may direct your financial institution to debit your account on the following banking day. If you are unsure about which day your account has or will be debited you should ask your financial institution.

2. Amendments by us

a) We may vary any details of this agreement or a Direct Debit Request at any time by giving you at least fourteen (14) days written notice.

3. Amendments by you

a) You may change, stop or defer a debit payment, or terminate this agreement by providing us with at least fourteen (14) days notification by writing to:

I. Unit Registry Mainstream Fund Services Pty Ltd GPO BOX 4968 Sydney NSW 2001

or

II. by telephoning us on 1300 133 451 or +61 2 8259 8888 (International) during business hours; or

III. arranging it through your own financial institution.

4. Your obligations

a) It is your responsibility to ensure that there are sufficient clear funds available in your account to allow a debit payment to be made in accordance with the Direct Debit Request.

b) If there are insufficient clear funds in your account to meet a debit payment:

I. you may be charged a fee and/or interest by your financial institution;

II. you may also incur fees or charges imposed or incurred by us; and

III. you must arrange for the debit payment to be made by another method or arrange for sufficient clear funds to be in your account by an agreed time so that we can process the debit payment.

c) You should check your account statement to verify that the amounts debited from your account are correct

d) If Mainstream Fund Services Pty Ltd is liable to pay goods and services tax ("GST") on a supply made in connection with this agreement, then you agree to pay Mainstream Fund Services Pty Ltd on demand an amount equal to the consideration payable for the supply multiplied by the prevailing GST rate.

5. Dispute

a) If you believe that there has been an error in debiting your account, you should notify us directly on 1300 133 451 and confirm that notice in writing with us as soon as possible so that we can resolve your query more quickly. Alternatively, you can take it up with your financial institution direct.

b)If we conclude as a result of our investigations that your account has been incorrectly debited we will respond to your query by arranging for your financial institution to adjust your account (including interest and charges) accordingly. We will also notify you in writing of the amount by which your account has been adjusted.

c)If we conclude as a result of our investigations that your account has not been incorrectly debited we will respond to your query by providing you with reasons and any evidence for this finding in writing.

6.Accounts

You should check:

I.with your financial institution whether direct debiting is available from your account as direct debiting is not available on all accounts offered by financial institutions.

II.your account details which you have provided to us are correct by checking them against a recent account statement; and

III.with your financial institution before completing the Direct Debit Request if you have any queries about how to complete the Direct Debit Request.

7.Confidentiality

a)We will keep any information (including your account details) in your Direct Debit Request confidential. We will make

reasonable efforts to keep any such information that we have about you secure and to ensure that any of our employees or agents who have access to information about you do not make any unauthorised use, modification, reproduction or disclosure of that information.

b)We will only disclose information that we have about you:

I.to the extent specifically required by law; or

II.for the purposes of this agreement (including disclosing information in connection with any query or claim).

8.Notice

a)If you wish to notify us in writing about anything relating to this agreement, you should write to

Mainstream Fund Services Pty Ltd

GPO Box 4968

Sydney NSW 2001

b)We will notify you by sending a notice in the ordinary post to the address you have given us in the Direct Debit Request.

Any notice will be deemed to have been received on the third banking day after posting

8. Keeping track of your investment

Complaints resolution

Equity Trustees has an established complaints handling process and is committed to properly considering and resolving all complaints. If you have a complaint about your investment, please contact us on:

Phone: 1300 133 472
Post: Equity Trustees Limited
GPO Box 2307, Melbourne VIC 3001
Email: compliance@eqt.com.au

We will acknowledge receipt of the complaint within 1 Business Day or as soon as possible after receiving the complaint. We will seek to resolve your complaint as soon as practicable but not more than 30 calendar days after receiving the complaint.

If you are not satisfied with our response to your complaint, you may be able to lodge a complaint with the Australian Financial Complaints Authority ("AFCA").

Contact details are:
Online: www.afca.org.au
Phone: 1800 931 678
Email: info@afca.org.au
Post: GPO Box 3, Melbourne VIC 3001.

The external dispute resolution body is established to assist you in resolving your complaint where you have been unable to do so with us. However, it's important that you contact us first.

All investors (regardless of whether you hold units in the Fund directly or hold units indirectly via an IDPS) are able to access Equity Trustee's complaints procedures. For Indirect Investors, if your complaint concerns the operation of the IDPS you should contact the IDPS operator directly.

Reports

We will make the following statements available to all investors;

- A transaction confirmation statement, showing a change in your unit holding (provided when a transaction occurs or on request).
- The Fund's annual audited accounts for each period ended 30 June.
- Annual distribution, tax and confirmation of holdings statements for each period ended 30 June.
- Annual report detailing each of the following:
 - the actual allocation to each asset type;
 - the liquidity profile of the portfolio assets as at the end of the period;
 - the maturity profile of the liabilities as at the end of the period;
 - the derivative counterparties engaged (including capital protection providers); and
 - the leverage ratio (including leverage embedded in the assets of the Fund, other than listed equities and bonds) as at the end of the period;
 - the key service providers if they have changed since the latest report given to investors, including any change in their related party status.

The latest annual report will be available online from www.harvestlaneam.com.au.

The following information is available on "Harvest Lane"'s website and/or is disclosed monthly:

- the current total NAV of the Fund and the withdrawal value of a unit in each class of units as at the date the NAV was calculated;
- the monthly or annual investment returns over at least a five-year period (or, if the Fund has not been operating for five years, the returns since its inception);
- any change to key service providers if they have changed since last report given to investors;
- for each of the following matters since the last report on those matters:
 - the net return on the Fund's assets after fees, costs and taxes;
 - any material change in the Fund's risk profile;
 - any material change in the Fund's strategy; and
 - any change in the individuals playing a key role in investment decisions for the Fund.

By applying to invest in the Fund, you agree that, to the extent permitted by law, any periodic information which is required to be given to you under the Corporations Act or ASIC policy can be given to you by making that information available on Equity Trustees' or the Investment Manager's website.

Please note that Indirect Investors who access the Fund through an IDPS will receive reports directly from the IDPS Operator and not from the Responsible Entity. However, Equity Trustees will be providing the reports described above to relevant IDPS Operators. Indirect Investors should refer to their IDPS Guide for information on the reports they will receive regarding their investment.

If and when the Fund has 100 or more direct investors, it will be classified by the Corporations Act as a 'disclosing entity'. As a disclosing entity the Fund will be subject to regular reporting and disclosure obligations. Investors would have a right to obtain a copy, free of charge, of any of the following documents:

- the most recent annual financial report lodged with ASIC ("Annual Report");
- any subsequent half yearly financial report lodged with ASIC after the lodgement of the Annual Report; and
- any continuous disclosure notices lodged with ASIC after the Annual Report but before the date of this PDS.

Equity Trustees will comply with any continuous disclosure obligation by lodging documents with ASIC as and when required.

Copies of these documents lodged with ASIC in relation to the Fund may be obtained through ASIC's website at www.asic.gov.au.

9. Fees and other costs

DID YOU KNOW?

Small differences in both investment performance and fees and costs can have a substantial impact on your long-term returns.

For example, total annual fees and costs of 2% of your investment balance rather than 1% could reduce your final return by up to 20% over a 30-year period (for example, reduce it from \$100,000 to \$80,000).

You should consider whether features such as superior investment performance or the provision of better member services justify higher fees and costs.

You may be able to negotiate to pay lower fees. Ask the fund or your financial adviser.

TO FIND OUT MORE

If you would like to find out more, or see the impact of the fees based on your own circumstances, the **Australian Securities and Investments Commission (ASIC)** Moneysmart website (www.moneysmart.gov.au) has a managed funds fee calculator to help you check out different fee options.

Fees and other costs

This section shows fees and other costs that you may be charged. These fees and costs may be deducted from your money, from the returns on your investment or from the assets of the managed investment scheme as a whole.

Taxes are set out in another part of this document. You should read all the information about fees and costs because it is important to understand their impact on your investment.

Fees and Costs Summary

Harvest Lane Asset Management Absolute Return Fund		
Type of fee or cost	Amount	How and when paid
Ongoing annual fees and costs¹		
<i>Management fees and costs</i> The fees and costs for managing your investment	1.25% of the NAV of the Fund	The management fees component of management fees and costs are accrued daily and paid from the Fund monthly in arrears and reflected in the unit price. Otherwise, the fees and costs are variable and deducted and reflected in the unit price of the Fund as they are incurred. The management fees component of management fees and costs can be negotiated. Please see "Differential fees" in the "Additional Explanation of Fees and Costs" for further information.
<i>Performance fees</i> Amounts deducted from your investment in relation to the performance of the product	1.77% of the NAV of the Fund ²	Performance fees are calculated daily and paid semi-annually in arrears from the Fund and reflected in the unit price.
<i>Transaction costs</i> The costs incurred by the scheme when buying or selling assets	0.51% of the NAV of the Fund	Transaction costs are variable and deducted from the Fund as they are incurred and reflected in the unit price. They are disclosed net of amounts recovered by the buy-sell spread.
Member activity related fees and costs (fees for services or when your money moves in or out of the scheme)		
<i>Establishment fee</i> The fee to open your investment	Not applicable	Not applicable
<i>Contribution fee</i> The fee on each amount contributed to your investment	Not applicable	Not applicable

Harvest Lane Asset Management Absolute Return Fund

Buy-sell spread An amount deducted from your investment representing costs incurred in transactions by the scheme	0.25% upon entry and 0.25% upon exit	These costs are an additional cost to the investor but are incorporated into the unit price and arise when investing application monies and funding withdrawals from the Fund and are not separately charged to the investor. The Buy Spread is paid into the Fund as part of an application and the Sell Spread is left in the Fund as part of a redemption.
Withdrawal fee The fee on each amount you take out of your investment	Not applicable	Not applicable
Exit fee The fee to close your investment	Not applicable	Not applicable
Switching fee The fee for changing investment options	Not applicable	Not applicable

¹ All fees quoted above are inclusive of Goods and Services Tax (GST) and net of any Reduced Input Tax Credits (RITC). See below for more details as to how the relevant fees and costs are calculated.

² This represents the performance fee of the Fund which is payable as an expense of the Fund to the Investment Manager. See "Performance fees" below for more information.

Additional Explanation of Fees and Costs

Management fees and costs

The management fees and costs include amounts payable for administering and operating the Fund, investing the assets of the Fund, expenses and reimbursements in relation to the Fund and indirect costs if applicable.

Management fees and costs do not include performance fees or transaction costs, which are disclosed separately.

The management fees component of management fees and costs of 1.25% p.a. of the NAV of the Fund is payable to the Responsible Entity of the Fund for managing the assets and overseeing the operations of the Fund. The management fees component is accrued daily and paid from the Fund monthly in arrears and reflected in the unit price. As at the date of this PDS, the management fees component covers certain ordinary expenses such as Responsible Entity fees, investment management fees, custodian fees, and administration and audit fees.

The indirect costs and other expenses component of 0.00% p.a. of the NAV of the Fund may include other ordinary expenses of operating the Fund, as well as management fees and costs (if any) arising from interposed vehicles in or through which the Fund invests. The indirect costs and other expenses component is variable and reflected in the unit price of the Fund as the relevant fees and costs are incurred. They are borne by investors, but they are not paid to the Responsible Entity or Investment Manager.

Actual indirect costs for the current and future years may differ. If in future there is an increase to indirect costs disclosed in this PDS, updates will be provided on Equity Trustees' website at www.eqf.com.au/insto where they are not otherwise required to be disclosed to investors under law.

Performance fees

Performance fees include amounts that are calculated by reference to the performance of the Fund.

The performance fee figure that is disclosed in the Fees and Costs Summary, as being 1.77% of the NAV of the Fund, is based on an average of the performance fees over the previous five financial years, where each performance fee relevant to the Fund is averaged and totalled to give the performance fees for the Fund.

The performance fee is 25% of the total return of the Fund after fees and costs have been deducted, that is in excess of the benchmark return, and is calculated daily and paid semi-annually in arrears. When the total return of the Fund is less than the benchmark return, no performance fee is payable. No performance fee is payable until any previous periods of underperformance have been made up. The performance fee is payable semi-annually in arrears as at 30 June and 31 December.

Please note that the performance fees disclosed in the Fees and Costs Summary is not a forecast as the actual performance fee for the current and future financial years may differ. The Responsible Entity cannot guarantee that performance fees will remain at their previous level or that the performance of the Fund will outperform the Benchmark.

It is not possible to estimate the actual performance fee payable in any given period, as we cannot forecast what the performance of the Fund will be. Information on current performance fees will be updated from time to time and available at www.eqf.com.au/insto.

Performance fee example

The example below is provided for illustrative purposes only and does not represent any actual or prospective performance of the Fund. We do not provide any assurance that the Fund will achieve the performance used in the example and you should not rely on this example in determining whether to invest in the Fund.

Assuming constant amount of \$100,000 invested:

Fund return (after management fee and before performance fee) for the calculation period % p.a	Benchmark RBA Cash Rate (1.5% example)	Fund return (after benchmark of RBA cash rate of 1.5% and before performance fee) for the calculation period % p.a	Example performance fee (%)	Example performance fee (\$)	Investment Return p.a (%) after management fee and deduction of performance fee.	Investment Return p.a (%) after RBA cash rate benchmark and deduction of performance fee. ²
-2.00%	1.50%	-2.00%	0.00%	\$0.00	-2.00%	-\$2,000.00
1.50%	1.50%	0.00%	0.00%	\$0.00	1.50%	\$0.00
2.50%	1.50%	1.00%	0.25%	\$250.00	2.25%	\$2,250.00
4.00%	1.50%	2.50%	0.63%	\$625.00	3.38%	\$3,375.00
6.50%	1.50%	4.00%	1.00%	\$1,000.00	5.50%	\$4,500.00
7.00%	1.50%	5.50%	1.38%	\$1,375.00	5.63%	\$5,625.00
8.50%	1.50%	7.00%	1.75%	\$1,750.00	6.75%	\$6,750.00
10.00%	1.50%	8.50%	2.13%	\$2,125.00	7.88%	\$7,875.00

Transaction costs

In managing the assets of the Fund, the Fund may incur transaction costs such as brokerage, buy-sell spreads in respect of the underlying investments of the Fund, settlement costs, clearing costs and applicable stamp duty when assets are bought and sold, and the costs of certain over-the-counter derivatives that reflect transaction costs that would arise if the Fund held the ultimate reference assets, as well as the costs of over-the-counter derivatives used for hedging purposes. Transaction costs also include costs incurred by interposed vehicles in which the Fund invests (if any), that would have been transaction costs if they had been incurred by the Fund itself. Transaction costs are an additional cost to the investor where they are not recovered by the Buy/Sell Spread, and are generally incurred when the assets of the Fund are changed in connection with day-to-day trading or when there are applications or withdrawals which cause net cash flows into or out of the Fund.

The Buy/Sell Spread that is disclosed in the Fees and Costs Summary is a reasonable estimate of transaction costs that the Fund will incur when buying or selling assets of the Fund. These costs are an additional cost to the investor but are incorporated into the unit price and arise when investing application monies and funding withdrawals from the Fund and are not separately charged to the investor. The Buy Spread is paid into the Fund as part of an application and the Sell Spread is left in the Fund as part of a redemption and not paid to Equity Trustees or the Investment Manager. The estimated Buy/Sell Spread is 0.25% upon entry and 0.25% upon exit. The dollar value of these costs based on an application or a withdrawal of \$5,000 is \$12.50 for each individual transaction. The Buy/Sell Spread can be altered by the Responsible Entity at any time and www.harvestlaneam.com.au will be updated as soon as practicable to reflect any change. The Responsible Entity may also waive the Buy/Sell Spread in part or in full at its discretion. The transaction costs figure in the Fees and Costs Summary is shown net of any amount recovered by the Buy/Sell Spread charged by the Responsible Entity.

Transaction costs generally arise through the day-to-day trading of the Fund's assets and are reflected in the Fund's unit price as an additional cost to the investor, as and when they are incurred.

The gross transaction costs for the Fund are 0.69% p.a. of the NAV of the Fund, which is based on the relevant costs incurred during the financial year ended 30 June 2020.

However, actual transaction costs for future years may differ.

Can the fees change?

Yes, all fees can change without investor consent, subject to the maximum fee amounts specified in the Constitution. The current maximum management fee to which Equity Trustees is entitled is 4.00% of the GAV of the Fund. However, Equity Trustees does not intend to charge that amount and will generally provide investors with at least 30 days' notice of any proposed increase to the management fees component of management fees and costs. In most circumstances, the Constitution defines the maximum level that can be charged for fees described in this PDS. Equity Trustees also has the right to recover all reasonable expenses incurred in relation to the proper performance of its duties in managing the Fund and as such these expenses may increase or decrease accordingly, without notice.

Payments to IDPS Operators

Subject to the law, annual payments may be made to some IDPS Operators because they offer the Fund on their investment menus. Product access is paid by the Investment Manager out of its investment management fee and is not an additional cost to the investor.

Differential fees

The Investment Manager may from time to time negotiate a different fee arrangement (by way of a rebate or waiver of fees) with certain investors who are Australian Wholesale Clients. Please contact the Investment Manager on 1300 419 420 for further information.

Taxation

Please refer to Section 10 of the Product Disclosure Statement for further information on taxation.

Example of annual fees and costs for an investment option

This table gives an example of how the ongoing annual fees and costs in the investment option for this product can affect your investment over a 1-year period. You should use this table to compare this product with other products offered by managed investment schemes.

EXAMPLE – Harvest Lane Asset Management Absolute Return Fund		
BALANCE OF \$50,000 WITH A CONTRIBUTION OF \$5,000 DURING THE YEAR		
Contribution Fees	Nil	For every additional \$5,000 you put in, you will be charged \$0
Plus Management fees and costs	1.25% p.a.	And , for every \$50,000 you have in the Harvest Lane Asset Management Absolute Return Fund you will be charged or have deducted from your investment \$625 each year
Plus Performance fees	1.77% p.a.	And , you will be charged or have deducted from your investment \$885 in performance fees each year
Plus Transaction costs	0.51% p.a.	And , you will be charged or have deducted from your investment \$255 in transaction costs
Equals Cost of Harvest Lane Asset Management Absolute Return Fund		If you had an investment of \$50,000 at the beginning of the year and you put in an additional \$5,000 during that year, you would be charged fees and costs of: \$1,765* What it costs you will depend on the investment option you choose and the fees you negotiate.

* Additional fees may apply. Please note that this example does not capture all the fees and costs that may apply to you such as the Buy/Sell Spread.

This example assumes the \$5,000 contribution occurs at the end of the first year, therefore the fees and costs are calculated using the \$50,000 balance only.

Warning: If you have consulted a financial adviser, you may pay additional fees. You should refer to the Statement of Advice or Financial Services Guide provided by your financial adviser in which details of the fees are set out.

ASIC provides a fee calculator on www.moneysmart.gov.au, which you may use to calculate the effects of fees and costs on account balances. The performance fees stated in this table are generally based on the average performance fee for the Fund over the previous five financial years. The performance of the Fund for this financial year, and the performance fees, may be higher or lower or not payable in the future. It is not a forecast of the performance of the Fund/class or the amount of the performance fees in the future.

The indirect costs and other expenses component of management fees and costs and transaction costs may also be based on estimates. As a result, the total fees and costs that you are charged may differ from the figures shown in the table.

10. Taxation

Taxation

The following information summarises some of the Australian taxation issues you may wish to consider before making an investment in the Fund and assumes that you hold your investment in the Fund on capital account and are not considered to be carrying on a business of investing, trading in investments or investing for the purpose of profit making by sale. The information should be used as a guide only and does not constitute professional tax advice as individual circumstances may differ.

A number of tax reform measures are currently under review by the Australian Government. These reforms may impact on the tax position of the Fund and its investors. Accordingly, it is recommended that investors seek their own professional advice, specific to their own circumstances, of the taxation implications of investing in the Fund.

General

The Fund is an Australian resident trust for Australian tax purposes. Therefore, the Fund is required to determine its net income (taxable income) for the year of income. On the basis that investors are presently entitled (which is the intention of Equity Trustees) to the net income of the Fund (including net taxable capital gains) or will be attributed their share of assessable income, exempt income, non-assessable non-exempt income and tax offsets (i.e. credits) of the Fund and the Fund is not a public trading trust, the Fund should be treated as a flow-through trust for tax purposes. This means that investors should be taxed on their share of the Fund's net taxable income or the amount attributed to them, and the Fund should not be subject to Australian income tax.

In the case where the Fund makes a loss for Australian tax purposes, the Fund cannot distribute the tax loss to investors. However, the tax loss may be carried forward by the Fund for offset against taxable income of the Fund in subsequent years, subject to the operation of the trust loss rules.

Attribution Managed Investment Trust ("AMIT") – core rules

The Fund may qualify as an eligible Attribution Managed Investment Trust (AMIT), and if so, intends to elect into the AMIT regime. The AMIT legislation applies an attribution model whereby Equity Trustees as the Responsible Entity of the Fund attributes amounts of trust components of a particular character to investors on a fair and reasonable basis consistent with the operation of the Fund's Constitution, which includes provisions in relation to AMIT. Under the AMIT rules, the following will apply:

Fair and reasonable attribution: Each year, the Fund's determined trust components of assessable income, exempt income, non-assessable non-exempt income and tax offsets (i.e. credits) will be allocated to investors on a "fair and reasonable" attribution basis, rather than being allocated proportionally based on each investor's present entitlement to the income of the Fund.

Unders or overs adjustments: Where the Fund's determined trust components for a year are revised in a subsequent year (e.g. due to actual amounts differing to the estimates of income, gains / losses or expenses), then unders and overs may arise. Unders and overs will generally be carried forward and adjusted in the year of discovery.

Cost base adjustments: Where the distribution made is less than (or more than) certain components attributed to investors, then the cost base of an investor's units may be increased (or

decreased). Details of cost base adjustments will be included on an investor's annual tax statement, referred to as an AMIT Member Annual Statement ("AMMA").

Large withdrawals: In certain circumstances, gains may be attributed to a specific investor, for example, gains on disposal of assets to fund a large withdrawal being attributed to the redeeming investor.

Penalties: In certain circumstances (e.g. failure to comply with certain AMIT rules), specific penalties may be imposed.

The new rules are intended to reduce complexity, increase certainty and reduce compliance costs for managed investment trusts and their investors. Where the Fund does not elect into the AMIT regime, or has made the election but the election is not effective for the income year (e.g. the Fund does not satisfy the requirements to be a managed investment trust for the income year), the Tax Law applicable to non-AMITs should be relevant. In particular, the Fund should not generally pay tax on behalf of its investors and instead, investors should be assessed for tax on any income and capital gains generated by the Fund to which they become presently entitled.

Deemed Capital Gains Tax ("CGT") Election

Eligible managed investment trusts ("MITs") may make an election to apply a deemed capital account treatment for gains and losses on disposal of certain eligible investments (including equities and units in other trusts but excluding derivatives, debt securities and foreign exchange contracts). Where the election is made the Fund should hold its eligible investments on capital account and gains/(losses) from the disposal of eligible investments should be treated as capital gains/(losses). Capital gains arising on the disposal of eligible investments held for 12 months or greater may be eligible to be treated as discount capital gains.

Where the CGT election is not made, the Fund should hold its eligible investments on revenue account and gains/(losses) from the disposal of eligible investments should be treated as revenue gains or losses.

Controlled Foreign Company ("CFC") Provisions

There are certain tax rules (i.e. the CFC provisions) which may result in assessable income arising in the Fund in relation to investments in foreign equities, where certain control thresholds are met. If such interests were to be held at the end of the income year, the taxable income of the Fund may include a share of net income and gains (i.e. CFC attributable income) from such investments.

Taxation of Financial Arrangements ("TOFA")

The TOFA rules may apply to certain "financial arrangements" held by the Fund. In broad terms, the TOFA regime seeks to recognise "sufficiently certain" returns on certain financial arrangements on an accruals basis for tax purposes rather than on a realisation basis. Where returns from derivative instruments are not "sufficiently certain" they will continue to be recognised on a realisation basis, unless specific tax timing elections are made.

Taxation Reform

The tax information included in this PDS is based on the taxation legislation and administrative practice as at the issue date of this PDS, together with proposed changes to the taxation legislation as announced by the Government. However, the Australian tax system is in a continuing state of reform, and based on the Government's reform agenda, it is likely to escalate rather than diminish. Any reform of a tax system creates uncertainty as to the full extent of announced reforms, or uncertainty as to the meaning of new law that is

enacted pending interpretation through the judicial process. These reforms may impact on the tax position of the Fund and its investors. Accordingly, it will be necessary to closely monitor the progress of these reforms, and investors should seek their own professional advice, specific to their own circumstances, of the taxation implications of investing in the Fund.

Tax File Number (“TFN”) and Australian Business Number (“ABN”)

It is not compulsory for an investor to quote their TFN or ABN. If an investor is making this investment in the course of a business or enterprise, the investor may quote an ABN instead of a TFN. Failure by an investor to quote an ABN or TFN or claim an exemption may cause the Responsible Entity to withhold tax at the top marginal rate, plus the Medicare Levy, on gross payments including distributions or attribution of income to the investor. The investor may be able to claim a credit in their tax return for any TFN or ABN tax withheld. Collection of TFNs is permitted under taxation and privacy legislation.

By quoting their TFN or ABN, the investor authorises Equity Trustees to apply it in respect of all the investor’s investments with Equity Trustees. If the investor does not want to quote their TFN or ABN for some investments, Equity Trustees should be advised.

GST

The Fund is registered for GST. The issue or withdrawal of units in the Fund and receipt of distributions are not subject to GST.

The Fund may be required to pay GST included in management and other fees, charges, costs and expenses incurred by the Fund. However, to the extent permissible, the Responsible Entity will claim on behalf of the Fund a proportion of this GST as a reduced input tax credit. Unless otherwise stated, fees and charges quoted in this PDS are inclusive of GST and take into account any available reduced input tax credits. The Fund may be entitled to as yet undetermined additional input tax credits on the fees, charges or costs incurred. If the Responsible Entity is unable to claim input tax credits on behalf of the Fund, the Responsible Entity retains the ability to recover the entire GST component of all fees and charges.

The impact of GST payments and credits will be reflected in the unit price of the Fund. Investors should seek professional advice with respect to the GST consequences arising from their unit holding.

Australian Taxation of Australian Resident Investors

Distributions

For each year of income, each Australian resident investor will be required to include within their own tax calculations and tax return filings the assessable income, exempt income, non-assessable non-exempt income and tax offsets (i.e. credits) of the Fund attributed to them by Equity Trustees as the Responsible Entity of the Fund.

The tax consequences for investors in the Fund depends on the tax components of assessable income, exempt income, non-assessable non-exempt income and tax offsets (i.e. credits) of the Fund attributed to them.

Investors will receive an Annual Tax Statement (or an “AMMA” for an AMIT) detailing all relevant taxation information concerning attributed amounts and cash distributions, including any Foreign Income Tax Offset (“FITO”) and franking credit entitlements, returns of capital, assessable income, and any upwards or downwards cost base adjustment in the capital gains tax cost base of their units in the Fund (in the case of an AMIT).

An investor may receive their share of attributed tax components of the Fund or net income in respect of distributions made during the year or where they have made a

large withdrawal from the Fund, in which case their withdrawal proceeds may include their share of net income or attributed tax components of assessable income, exempt income, non-assessable non-exempt income and tax offsets (i.e. credits). In addition, because Australian investors can move into and out of the Fund at different points in time, there is the risk that taxation liabilities in respect of gains that have benefited past investors may have to be met by subsequent investors.

Foreign Income

The Fund may derive foreign source income that is subject to tax overseas, for example withholding tax. Australian resident investors should include their share of both the foreign income and the amount of the foreign tax withheld in their assessable income. In such circumstances, investors may be entitled to a FITO for the foreign tax paid, against the Australian tax payable on the foreign source income. To the extent the investors do not have sufficient overall foreign source income to utilise all of the FITOs relevant to a particular year of income, the excess FITOs cannot be carried forward to a future income year.

Disposal of Units by Australian Resident Investors

If an Australian resident investor transfers or redeems their units in the Fund, this may constitute a disposal for tax purposes depending on their specific circumstances.

Where an investor holds their units in the Fund on capital account, a capital gain or loss may arise on disposal and each investor should calculate their capital gain or loss according to their own particular facts and circumstances. As noted above, proceeds on disposal may include a component of distributable income. In calculating the taxable amount of a capital gain, a discount of 50% for individuals and trusts or 33 & 1/3% for complying Australian superannuation funds may be allowed where the units in the Fund have been held for 12 months or more. No CGT discount is available to corporate investors.

Any capital losses arising from the disposal of the investment may be used to offset other capital gains the investor may have derived. Net capital losses may be carried forward for offset against capital gains of subsequent years but may not be offset against ordinary income.

The discount capital gains concession may be denied in certain circumstances where an investor (together with associates) holds 10% or more of the issued units of the Fund, the Fund has less than 300 beneficiaries and other requirements are met. Investors who together with associates are likely to hold more than 10% of the units in the Fund should seek advice on this issue.

Australian Taxation of Non-Resident Investors

Tax on Income

The Fund expects to derive income which may be subject to Australian withholding tax when attributed by Equity Trustees as the Responsible Entity of the Fund to non-resident investors.

Australian withholding tax may be withheld from distributions of Australian source income and gains attributed to a non-resident investor. The various components of the net income of the Fund which may be regarded as having an Australian source include Australian sourced interest, Australian sourced other gains, Australian sourced dividends and CGT taxable Australian property.

We recommend that non-resident investors seek independent tax advice before investing, taking into account their particular circumstances and the provisions of any relevant Double Taxation Agreement/Exchange of Information Agreement (“EOI”) between Australia and their country of residence.

Disposal of Units by Non-Resident Investors

Based on the Fund's investment profile, generally non-resident investors holding their units on capital account should not be subject to Australian capital gains tax on the disposal of units in the Fund unless the units were capital assets held by the investor in carrying on a business through a permanent establishment in Australia. Australian tax may apply in certain

circumstances if the non-resident holds their units on revenue account. CGT may also apply in some cases where the Fund has a direct or indirect interest in Australian real property. We recommend that non-resident investors seek independent tax advice in relation to the tax consequences of the disposal of their units.

11. Other important information

Consent

The Investment Manager, Administrator and Custodian have given and, as at the date of this PDS, have not withdrawn:

- their written consent to be named in this PDS as the investment manager, administrator and custodian of the Fund respectively; and
- their written consent to the inclusion of the statements made about them and the Fund which are specifically attributed to them, in the form and context in which they appear.

The Investment Manager, Administrator and the Custodian have not otherwise been involved in the preparation of this PDS or caused or otherwise authorised the issue of this PDS. Neither the Investment Manager, the Administrator, the Custodian nor their employees or officers accept any responsibility arising in any way for errors or omissions, other than those statements for which it has provided its written consent to Equity Trustees for inclusion in this PDS.

Constitution of the Fund

You will be issued units in the Fund when you invest. Subject to the rights, obligations and restrictions of a class, each unit represents an equal undivided fractional beneficial interest in the assets of the Fund as a whole subject to liabilities, but does not give you an interest in any particular property of the Fund.

Equity Trustees' responsibilities and obligations, as the responsible entity of the Fund, are governed by the Constitution as well as the Corporations Act and general trust law. The Constitution contains a number of provisions relating to the rights, terms, conditions and obligations imposed on both Equity Trustees, as the responsible entity of the Fund, and investors. Some of the provisions of the Constitution are discussed elsewhere in this PDS.

Other provisions relate to an investor's rights under the Constitution, and include:

- an investor's right to share in any Fund income, and how we calculate it;
- what you are entitled to receive when you withdraw or if the Fund is wound up;
- an investor's right to withdraw from the Fund - subject to the times when we can cease processing withdrawals, such as if a Fund becomes 'illiquid';
- the nature of the units - identical rights attach to all units within a class; and
- an investor's rights to attend and vote at meetings - these provisions are mainly contained in the Corporations Act.

There are also provisions governing our powers and duties, including:

- how we calculate unit prices, the maximum amount of fees we can charge and expenses we can recover;
- when we can amend the Constitution - generally we can only amend the Constitution where we reasonably believe that the changes will not adversely affect investors' rights. Otherwise the Constitution can only be amended if approved at a meeting of investors;
- when we can retire as the Responsible Entity of the Fund - which is as permitted by law;
- when we can be removed as the Responsible Entity of the Fund - which is when required by law; and
- our broad powers to invest, borrow and generally manage the Fund.

The Constitution also deals with our liabilities in relation to the Fund and when we can be reimbursed out of the Fund's assets.

For example, we can be reimbursed for any liabilities we incur in connection with the proper performance of our powers and duties in respect of the Fund.

As mentioned above, Equity Trustees' responsibilities and obligations as the Responsible Entity of the Fund are governed by the Constitution of the Fund, the Corporations Act and general trust law, which require that we:

- act in the best interests of investors and, if there is a conflict between investors' interests and our own, give priority to investors;
- ensure the property of the Fund is clearly identified, held separately from other funds and our assets, and is valued regularly;
- ensure payments from the Fund's property are made in accordance with the Constitution and the Corporations Act; and
- report to ASIC any breach of the Corporations Act in relation to the Fund which has had, or is likely to have, a materially adverse effect on investors' interests.

Copies of the Constitution are available, free of charge, on request from Equity Trustees.

Non-listing of units

The units in the Fund are not listed on any stock exchange and no application will be made to list the units in the Fund on any stock exchange.

Termination of the Fund

The Responsible Entity may resolve at any time to terminate and liquidate the Fund (if it provides investors with notice) in accordance with the Constitution and the Corporations Act. Upon termination and after conversion of the assets of the Fund into cash and payment of, or provision for, all costs, expenses and liabilities (actual and anticipated), the net proceeds will be distributed pro-rata among all investors according to the number of units they hold in a class in the Fund.

Our legal relationship with you

Equity Trustees' responsibilities and obligations, as the Responsible Entity of the Fund, are governed by the Constitution of the Fund, as well as the Corporations Act and general trust law. The Constitution of the Fund contains a number of provisions relating to the rights, terms, conditions and obligations imposed on both Equity Trustees, as the responsible entity of the Fund, and investors.

Equity Trustees may amend the Constitution if it considers that the amendment will not adversely affect investors' rights. Otherwise the Constitution may be amended by way of a special resolution of investors.

To the extent that any contract or obligation arises in connection with the acceptance by Equity Trustees of an application or reliance on this PDS by an investor, any amendment to the Constitution may vary or cancel that contract or obligation. Further, that contract or obligation may be varied or cancelled by a deed executed by Equity Trustees with the approval of a special resolution of investors, or without that approval if Equity Trustees considers the variation or cancellation will not materially adversely affect investor's rights.

A copy of the Constitution of the Fund is available, free of charge, on request from Equity Trustees.

Compliance plan

Equity Trustees has prepared and lodged a compliance plan for the Fund with ASIC. The compliance plan describes the procedures used by Equity Trustees to comply with the Corporations Act and the Constitution of the Fund. Each year the compliance plan for the Fund is audited and the audit report is lodged with ASIC.

Unit pricing discretions policy

Equity Trustees has developed a formal written policy in relation to the guidelines and relevant factors taken into account when exercising any discretion in calculating unit prices (including determining the value of assets and liabilities). A copy of the policy and, where applicable and to the extent required, any other relevant documents in relation to the policy (such as records of any discretions which are outside the scope of, or inconsistent with, the unit pricing policy) will be made available to investors free of charge on request.

Indemnity

Equity Trustees, as the responsible entity of the Fund, is indemnified out of the Fund against all liabilities incurred by it in the proper performance of any of its powers or duties in relation to the Fund. To the extent permitted by the Corporations Act, this indemnity includes any liability incurred as a result of any act or omission of a delegate or agent appointed by the Responsible Entity. Subject to the law, Equity Trustees may retain or pay out from the assets of the Fund any sum necessary to affect such an indemnity.

Anti-Money Laundering and Counter Terrorism Financing (“AML/CTF”)

Australia’s AML/CTF laws require Equity Trustees to adopt and maintain a written AML/CTF Program. A fundamental part of the AML/CTF Program is that Equity Trustees must hold up-to-date information about investors (including beneficial owner information) in the Fund.

To meet this legal requirement, we need to collect certain identification information (including beneficial owner information) and documentation (“KYC Documents”) from new investors. Existing investors may also be asked to provide KYC Documents as part of an ongoing customer due diligence/verification process to comply with AML/CTF laws. If applicants or investors do not provide the applicable KYC Documents when requested, Equity Trustees may be unable to process an application, or may be unable to provide products or services to existing investors until such time as the information is provided.

In order to comply with AML/CTF Laws, Equity Trustees may also disclose information including your personal information that it holds about the applicant, an investor, or any beneficial owner, to its related bodies corporate or service providers, or relevant regulators of AML/CTF Laws (whether inside or outside Australia). Equity Trustees may be prohibited by law from informing applicants or investors that such reporting has occurred.

Equity Trustees and the Investment Manager shall not be liable to applicants or investors for any loss you may suffer because of compliance with the AML/CTF laws.

Common Reporting Standard (“CRS”)

The CRS is developed by the Organisation of Economic Co-operation and Development and requires certain financial institutions resident in a participating jurisdiction to document and identify reportable accounts and implement due diligence procedures. These financial institutions will also be required to report certain information on reportable accounts to their relevant local tax authorities.

Australia signed the CRS Multilateral Competent Authority Agreement and has enacted provisions within the domestic tax legislation to implement CRS in Australia. Australian financial institutions need to document and identify reportable accounts, implement due diligence procedures and report certain information with respect to reportable accounts to the ATO. The ATO may then exchange this information with foreign tax authorities in the relevant signatory countries.

In order to comply with the CRS obligations, we may request certain information from you. Unlike FATCA, there is no withholding tax that is applicable under CRS.

Information on underlying investments

Information regarding the underlying investments of the Fund will be provided to an investor of the Fund on request, to the extent Equity Trustees is satisfied that such information is required to enable the investor to comply with its statutory reporting obligations. This information will be supplied within a reasonable timeframe having regard to these obligations.

Indirect Investors

You may be able to invest indirectly in the Fund via an IDPS by directing the IDPS Operator to acquire units on your behalf. If you do so, you will need to complete the relevant forms provided by the IDPS Operator and not the Application Form accompanying the PDS. This will mean that you are an Indirect Investor in the Fund and not an investor or member of the Fund. Indirect Investors do not acquire the rights of an investor (except in relation to access to Equity Trustee’s complaints resolution process – see Section 8) as such rights are acquired by the IDPS Operator who may exercise, or decline to exercise, these rights on your behalf.

Indirect Investors do not receive reports or statements from us and the IDPS Operator’s application and withdrawal conditions determine when you can direct the IDPS Operator to apply or redeem. Your rights as an Indirect Investor should be set out in the IDPS Guide or other disclosure document issued by the IDPS Operator.

Foreign Account Tax Compliance Act (“FATCA”)

In April 2014, the Australian Government signed an intergovernmental agreement (“IGA”) with the United States of America (“U.S.”), which requires all Australian financial institutions to comply with the FATCA Act enacted by the U.S. in 2010.

Under FATCA, Australian financial institutions are required to collect and review their information to identify U.S. residents and U.S. controlling persons that invest in assets through non-U.S. entities. This information is reported to the Australian Taxation Office (“ATO”). The ATO may then pass that information onto the U.S. Internal Revenue Service.

In order to comply with the FATCA obligations, we may request certain information from you. Failure to comply with FATCA obligations may result in the Fund, to the extent relevant, being subject to a 30% withholding tax on payment of U.S. income or gross proceeds from the sale of certain U.S. investments. If the Fund suffers any amount of FATCA withholding and is unable to obtain a refund for the amounts withheld, we will not be required to compensate investors for any such withholding and the effect of the amounts withheld will be reflected in the returns of the Fund.

Your privacy

The Australian Privacy Principles contained in the Privacy Act 1988 (Cth) (“Privacy Act”) regulate the way in which we collect, use, disclose, and otherwise handle your personal information. Equity Trustees is committed to respecting and protecting the privacy of your personal information, and our Privacy Policy details how we do this.

It is important to be aware that, in order to provide our products and services to you, Equity Trustees may need to collect personal information about you and any other individuals associated with the product or service offering. In addition to practical reasons, this is necessary to ensure compliance with our legal and regulatory obligations (including under the Corporations Act, the AML/CTF Act and taxation legislation). If you do not provide the information requested, we may not be able to process your application, administer, manage, invest, pay or transfer your investment(s).

You must therefore ensure that any personal information you provide to Equity Trustees is true and correct in every detail. If any of this personal information (including your contact details) changes, you must promptly advise us of the changes in writing. While we will generally collect your personal information from you, your broker or adviser or the Investment Manager and Administrator directly, we may also obtain or confirm information about you from publicly available sources in order to meet regulatory obligations.

In terms of how we deal with your personal information, Equity Trustees will use it for the purpose of providing you with our products and services and complying with our regulatory obligations. Equity Trustees may also disclose it to other members of our corporate group, or to third parties who we work with or engage for these same purposes. Such third parties may be situated in Australia or offshore, however we take reasonable steps to ensure that they will comply with the Privacy Act when collecting, using or handling your personal information.

The types of third parties that we may disclose your information to include, but are not limited to:

- stockbrokers, financial advisers or adviser dealer groups, their service providers and/or any joint holder of an investment;

- those providing services for administering or managing the Fund, including the Investment Manager, Custodian and Administrator, auditors, or those that provide mailing or printing services;
- our other service providers;
- regulatory bodies such as ASIC, ATO, APRA and AUSTRAC; and
- other third parties who you have consented to us disclosing your information to, or to whom we are required or permitted by law to disclose information to.

Equity Trustees or the Investment Manager may from time to time provide you with direct marketing and/or educational material about products and services they believe may be of interest to you. You have the right to “opt out” of such communications by contacting us using the contact details below. In addition to the above information, Equity Trustees’ Privacy Policy contains further information about how we handle your personal information, and how you can access information held about you, seek a correction to that information, or make a privacy-related complaint. Full details of Equity Trustees’ Privacy Policy are available at www.eqt.com.au. You can also request a copy of the Policy by contacting Equity Trustees’ Privacy Officer on +61 3 8623 5000 or by email to privacy@eqt.com.au.

12. Glossary of important terms

AFSL

Australian Financial Services Licence.

ASIC

Australian Securities and Investments Commission

Application Form

The Application Form that accompanies the PDS.

ASIC

Australian Securities and Investments Commission

ATO

Australian Taxation Office.

AUSTRAC

Australian Transaction Reports and Analysis Centre.

Business Day

A day other than Saturday or Sunday on which banks are open for general banking business in Sydney.

Buy/Sell Spread

The difference between the application price and withdrawal price of units in the Fund, which reflects the estimated transaction costs associated with buying or selling the assets of the Fund, when investors invest in or withdraw from the Fund.

CFD

Contracts for difference – an arrangement made in financial derivatives trading where the differences in the settlement between the open and closing trade prices are cash settled. There is no delivery of physical goods or securities with CFDs.

Constitution

The document which describes the rights, responsibilities and beneficial interest of both investors and the Responsible Entity in relation to the Fund, as amended from time to time.

Corporations Act

The Corporations Act 2001 and Corporations Regulations 2001 (Cth), as amended from time to time.

Derivative

A financial contract whose value is based on, or derived from, an asset class such as shares, interest rates, currencies or currency exchange rates and commodities. Common derivatives include options, futures and forward exchange contracts.

Equity Trustees

Equity Trustees Limited (ABN 46 004 031 298) which holds an AFSL No. 240975.

Fund

Harvest Lane Asset Management Absolute Return Fund

Fund Benchmark

RBA Cash Rate

ARSN

614 662 627

GST

Goods and Services Tax.

Indirect Investors

Individuals who invest in the Fund through an IDPS.

Investment Manager

Harvest Lane Asset Management Pty Ltd.

Net Asset Value (NAV)

Value of the investments of the Fund after deducting certain liabilities including income entitlements and contingent liabilities.

PDS

This Product Disclosure Statement, issued by Equity Trustees.

Responsible Entity

Equity Trustees Limited.

Retail Client

Persons or entities defined as such under section 761G of the Corporations Act.

Reserve Bank

Reserve Bank of Australia

RITC

Reduced Input Tax Credit. Equity Trustees will apply for reduced input tax credits where applicable to reduce the cost of GST to the Fund.

US Person

A person so classified under securities or tax law in the United States of America ("US") including, in broad terms, the following persons:

- (a) any citizen of, or natural person resident in, the US, its territories or possessions; or
- (b) any corporation or partnership organised or incorporated under any laws of or in the US or of any other jurisdiction if formed by a US Person (other than by accredited investors who are not natural persons, estates or trusts) principally for the purpose of investing in securities not registered under the US Securities Act of 1933; or
- (c) any agency or branch of a foreign entity located in the US; or
- (d) a pension plan primarily for US employees of a US Person; or
- (e) a US collective investment vehicle unless not offered to US Persons; or
- (f) any estate of which an executor or administrator is a US Person (unless an executor or administrator of the estate who is not a US Person has sole or substantial investment discretion over the assets of the estate and such estate is governed by non-US law) and all the estate income is non-US income not liable to US income tax; or
- (g) any Fund of which any trustee is a US Person (unless a trustee who is a professional fiduciary is a US Person and a trustee who is not a US Person has sole or substantial investment discretion over the assets of the trust and no beneficiary (or settlor, if the trust is revocable) of the trust is a US Person); or
- (h) any discretionary account or similar account (other than an estate or trust) held by a dealer or other fiduciary for the benefit or account of a US Person; or
- (i) any non-discretionary account or similar account (other than an estate or trust) held by a dealer or other fiduciary organised, incorporated or (if an individual) resident in the US for the benefit or account of a US Person.

Wholesale Client

Person or entity which is not a Retail Client.



HARVEST LANE ASSET MANAGEMENT ABSOLUTE RETURN FUND APPLICATION FORM

This application form accompanies the Product Disclosure Statement (PDS)/Information Memorandum (IM) relating to units in the following product/s issued by Equity Trustees Limited (ABN 46 004 031 298, AFSL 240975). The PDS/IM contains information about investing in the Fund/Trust. You should read the PDS/IM in its entirety before applying.

- Harvest Lane Asset Management Absolute Return Fund

The law prohibits any person passing this Application Form on to another person unless it is accompanied by a complete PDS/IM.

- If completing by hand, use a black or blue pen and print within the boxes in BLOCK LETTERS, if you make a mistake, cross it out and initial. DO NOT use correction fluid
- The investor(s) must complete and sign this form
- Keep a photocopy of your completed Application Form for your records

U.S. Persons: This offer is not open to any U.S. Person. Please refer to the PDS/IM for further information.

Foreign Account Tax Compliance Act (FATCA) and Common Reporting Standard (CRS)

We are required to collect certain information to comply with FATCA and CRS, please ensure you complete section 7.

If investing with an authorised representative, agent or financial adviser

Please ensure you, your authorised representative, agent and/or financial adviser also complete Section 6.

Provide certified copies of your identification documents

Please refer to section 9 on AML/CTF Identity Verification Requirements.

Send your documents & make your payment

See section 2 for payment options and where to send your application form.

SECTION 1 – YOUR CONSUMER ATTRIBUTES

In relation to our Design and Distribution Obligations (DDO) under the Corporations Act, we seek the following information about your attributes as an investor (please tick only 1 box for each question below)

Further information in relation to these questions can be found in the Target Market Determination (TMD) for the Fund. If you wish to access the TMD, please visit <https://www.eqt.com.au/insto/>

1. Have you received advice prior to applying to invest in the Fund?

- ☐ I/We have received personal advice in relation to my investment in this Fund
- ☐ I/We have received general advice in relation to my investment in this Fund
- ☐ I/We have not received any advice in relation to my investment in this Fund

2. What is your primary investment objective(s)?

- ☐ Capital growth ☐ Capital preservation
- ☐ Capital guaranteed ☐ Income Distribution

3. Please select the intended use of this Fund in your investment portfolio

- ☐ Solution/Standalone – A large allocation (75%-100% of portfolio)
- ☐ Core component – A medium allocation (25%-75% of portfolio)
- ☐ Satellite/Small Allocation – A small allocation (<25% of portfolio)

4. Please select the Intended investment timeframe

- ☐ Short term (<=2 years) ☐ Medium term (>2 years)
- ☐ Long term (>8 years)

5. What is your tolerance for risk?

- ☐ Low - I/we can tolerate up to 1 period of underperformance over 20 years ☐ Medium - I/we can tolerate up to 4 periods of underperformance over 20 years.
- ☐ High - I/we can tolerate up to 6 periods of underperformance over 20 years ☐ Very High - I/we can tolerate more than 6 periods of underperformance over 20 years

6. What do you anticipate your withdrawal needs may be?

- ☐ Daily ☐ Weekly
- ☐ Monthly ☐ Quarterly
- ☐ Annually or longer

Please note:

1. Failure to complete the above questions may result in your application not being accepted;
2. Acceptance of your application should not be taken as a representation or confirmation that an investment in the Fund is, or is likely to be, consistent with your intentions, objectives and needs as indicated in your responses to these questions; and
3. For further information on the suitability of this product, please refer to your financial adviser and/or the TMD

SECTION 1.2 – ARE YOU AN EXISTING INVESTOR IN THE FUND/TRUST AND WISH TO ADD TO YOUR INVESTMENT?

Do you have an existing investment in the Fund/Trust and the information provided remains current and correct?

☐ **Yes**, if you can tick both of the boxes below, complete Sections 2 and 8

☐ I/We confirm there are no changes to our identification documents previously provided and that these remain current and valid.

☐ I/We confirm there have been no changes to our FATCA or CRS status

Existing investor number:

If there have been changes in your identification documents or FATCA/CRS status since your last application, please complete the full Application Form as indicated below.

☐ **No**, please complete sections relevant to you as indicated below:

Investor Type:

☐ **Individuals/Joint:** complete section 2, 3, 6 (if applicable), 7, 8 & 9

☐ **Companies:** complete section 2, 4, 6 (if applicable), 7, 8 & 9

☐ **Custodians on behalf of underlying clients:** complete section 2, 4, 5, 5.1, 6 (if applicable), 7, 8 & 9

☐ **Trusts/superannuation funds:**

- with an individual trustee – complete sections 2, 3, 5, 6 (if applicable), 7, 8 & 9
- with a company as a trustee – complete sections 2, 4, 5, 6 (if applicable), 7, 8 & 9

If you are an Association, Co-operative, Partnership, Government Body or other type of entity not listed above, please contact Equity Trustees.

SECTION 2 – INVESTMENT DETAILS

Investment to be held in the name(s) of (must include name(s) of investor(s))

Postal address

Suburb

State

Postcode

Country

Email address

Contact no.

FUND/TRUST NAME	APIR CODE	APPLICATION AMOUNT (AUD)
Harvest Lane Asset Management Absolute Return Fund	FHT0042AU	\$

The minimum initial investment is \$5,000.

Distribution Instructions

If you do not select a distribution option, we will automatically reinvest your distribution. If you select cash, please ensure you provide your bank details below.

- ☐ **Reinvest distributions** if you select this option your distribution will be reinvested in the Fund/Trust
- ☐ **Pay distributions to the bank** if you select this option your distribution will be paid to the bank account below

Investor bank details

For withdrawals and distributions (if applicable), these must match the investor(s)' name and must be an AUD-denominated bank account with an Australian domiciled bank.

Financial institution name and branch location

BSB number

Account number

Account name


Payment method

- ☐ Cheque – payable to < Harvest Lane Absolute Return Fund >
- ☐ Direct credit – pay to:

Financial institution name and branch location	National Australia Bank 500 Bourke Street, Melbourne Vic 3000
BSB number	082 401
Account number	38 596 4328
Account name	Equity Trustees Limited as RE Harvest Lane Absolute Return Fund Application Account
Reference	<Investor Name>

☐ BPAY® - telephone & internet banking

Contact your bank or financial institution to make this payment from your cheque, savings, debit or transaction account. More info: www.bpay.com.au

Fund name	 BPAY® biller code (see below) Reference no: Your Investor Account Number
Harvest Lane Asset Management Absolute Return Fund	349985

Please note: if you are investing in more than one Fund, you will need to make separate payments for each Fund.

® Registered to BPAY Pty Ltd ABN 69 079 137 518.

Regular savings plan – please ensure you complete and sign the direct debit section below

Fund/Trust name	Regular savings plan amount (AUD)	Regular savings plan start date*
Harvest Lane Asset Management Absolute Return Fund	\$	19 / /

*Funds will be deducted on or around the 19th of each month

☐ Direct debit – complete below:

I/We request and authorise <Fund Administrator> (Direct Debit User ID 364011) to arrange, through its own financial institution, a debit to my/our nominated account any amount Equity Trustees has deemed payable by me/us. This debit or charge will be made through the Bulk Electronic Clearing System ("BECS") from my/our account held at the financial institution I/we have nominated below and will be subject to the "Direct Debit terms and conditions" (contained in the <PDS/IM>).

Financial institution name and branch location

--

BSB number

--	--	--	--	--	--

Account number

--	--	--	--	--	--	--	--	--	--	--	--

Account name

--

Acknowledgement

By signing and/or providing Equity Trustees with a valid instruction in respect to my/our direct debit request, I/we have understood and agreed to the terms and conditions governing the debit arrangements between me/us and Equity Trustees as set out in the "Direct Debit terms and conditions" (contained in the <PDS/IM>).

Signature – Investor 1

--

Date

--	--	--	--	--	--	--	--	--	--	--	--

Signature – Investor 2

--

Date

--	--	--	--	--	--	--	--	--	--	--	--

If signing for a company please include full name and capacity for signing (e.g. director)

Source of investment

Please indicate the source of the investment amount (e.g. retirement savings, employment income):

Send your completed Application Form to:

Mainstream Fund Services
Client Services Registry Team
GPO Box 4968 Sydney NSW 2001
Additional applications may be faxed to: +61 2 8244 1916

Please ensure you have completed all relevant sections and signed the Application Form

SECTION 3 – INVESTOR DETAILS – INDIVIDUALS/JOINT

Please complete if you are investing individually, jointly or you are an individual or joint trustee.

See Group A AML/CTF Identity Verification Requirements in Section 9

Investor 1

Title	First name(s)	Surname
<input type="text"/>	<input type="text"/>	<input type="text"/>

Residential address (not a PO Box/RMB/Locked Bag)

Suburb	State	Postcode	Country
<input type="text"/>	<input type="text"/>	<input type="text"/> <input type="text"/> <input type="text"/> <input type="text"/> <input type="text"/>	<input type="text"/>

Email address

(Statements will be sent to this address, unless you elect otherwise in Section 6)

Contact no.

Date of birth (DD/MM/YYYY)

 / /

Tax File Number* – or exemption code

Country of birth

Occupation

Does the investor named above hold a prominent public position or function in a government body (local, state, territory, national or foreign) or in an international organisation or are you an immediate family member or a business associate of such a person?

☐ No

☐ Yes, please give details:

Investor 2

Title	First name(s)	Surname
<input type="text"/>	<input type="text"/>	<input type="text"/>

Residential address (not a PO Box/RMB/Locked Bag)

Suburb	State	Postcode	Country
<input type="text"/>	<input type="text"/>	<input type="text"/> <input type="text"/> <input type="text"/> <input type="text"/> <input type="text"/>	<input type="text"/>

Email address

(Statements will be sent to this address, unless you elect otherwise in Section 6)

Contact no.

Date of birth (DD/MM/YYYY)

 / /

Tax File Number* – or exemption code

Country of birth

Occupation

If there are more than 2 registered owners, please provide details as an attachment.

Does the investor named above hold a prominent public position or function in a government body (local, state, territory, national or foreign) or in an international organisation or are you an immediate family member or a business associate of such a person?

☐ No

☐ Yes, please give details:

SECTION 4 – INVESTOR DETAILS – COMPANIES/CORPORATE TRUSTEE

Please complete if you are investing for a company or where the company is acting as trustee.

See Group B AML/CTF Identity Verification Requirements in Section 9

Full company name (as registered with ASIC or relevant foreign registered body)

Registered office address (not a PO Box/RMB/Locked Bag)

Suburb

State

Postcode

Country

Australian Company Number

Tax File Number* – or exemption code

Australian Business Number* (if registered in Australia) or equivalent foreign company identifier

Contact Person

Title

First name(s)

Surname

Email address

(Statements will be sent to this address, unless you elect otherwise in Section 6)

Contact no.

Principal place of business: If the principal place of business is the same as the registered office street address, state 'As above' below. Otherwise provide address details. For foreign companies registered with ASIC please provide a local agent name and address if you do not have a principal place of business in Australia.

Principal Place of Business Address (not a PO Box/RMB/Locked Bag)

Suburb

State

Postcode

Country

Registration details

Name of regulatory body

Identification number (e.g. ARBN)

Controlling Persons, Directors and Beneficial Owners

All beneficial owners who own, hold or control either directly or indirectly 25% or more of the issued capital of a proprietary or private company that is not regulated i.e. does not have an AFSL or ACLN etc., will need to provide Group A AML/CTF Identity Verification Requirements specified in Section 9. In the case of an unregulated public company not listed on a securities exchange, provide the details of the senior managing official(s) as controlling person(s) (e.g. managing director, senior executive(s) etc. who is/are authorised to sign on the company's behalf, and make policy, operational and financial decisions) in the following sections. All proprietary and private companies, whether regulated or unregulated, must provide the names of all of the directors.

Names of the Directors of a Proprietary or Private Company whether regulated or unregulated

1	2
3	4

If there are more than 4 directors, please write the other names below.

Names of the Beneficial Owners or Senior Managing Official(s)**Select:**

- ☐ Beneficial owner 1 of an unregulated proprietary or private company; OR
- ☐ Senior Managing Official of an unregulated, unlisted, public (e.g. Limited) company

Title	First name(s)	Surname
<input type="text"/>	<input type="text"/>	<input type="text"/>

Residential address (not a PO Box/RMB/Locked Bag)

Suburb	State	Postcode	Country
<input type="text"/>	<input type="text"/>	<input type="text"/> <input type="text"/> <input type="text"/> <input type="text"/>	<input type="text"/>

Date of birth (DD/MM/YYYY)

 / /

Does the beneficial owner named above hold a prominent public position or function in a government body (local, state, territory, national or foreign) or in an international organisation or are you an immediate family member or a business associate of such a person?

- ☐ No ☐ Yes, please give details:

Select:

- ☐ Beneficial owner 2 of an unregulated proprietary or private company; OR
- ☐ Senior Managing Official of an unregulated, unlisted, public (e.g. Limited) company

Title	First name(s)	Surname
<input type="text"/>	<input type="text"/>	<input type="text"/>

Residential address (not a PO Box/RMB/Locked Bag)

Suburb	State	Postcode	Country
<input type="text"/>	<input type="text"/>	<input type="text"/> <input type="text"/> <input type="text"/> <input type="text"/>	<input type="text"/>

Date of birth (DD/MM/YYYY)

 / /

Does the beneficial owner named above hold a prominent public position or function in a government body (local, state, territory, national or foreign) or in an international organisation or are you an immediate family member or a business associate of such a person?

- ☐ No ☐ Yes, please give details:

If there are more than 2 beneficial owners or managing officials, please copy and complete this page for the other persons or alternatively, provide the additional details as an attachment.

SECTION 5 – INVESTOR DETAILS – TRUSTS/SUPERANNUATION FUNDS

Please complete if you are investing for a trust or superannuation fund.

See Group C AML/CTF Identity Verification Requirements in section 9

Full name of trust or superannuation fund

Full name of business (if any)

Country where established

Australian Business Number* (if obtained)

--	--	--	--	--	--	--	--	--	--	--	--

Tax File Number* – or exemption code

--	--	--	--	--	--	--	--	--	--

Trustee details – How many trustees are there?

- ☐ **Individual trustee(s)** – complete Section 3 – Investor details – Individuals/Joint
- ☐ **Company trustee(s)** – complete Section 4 – Investor details – Companies/Corporate Trustee
- ☐ **Combination** – trustee(s) to complete each relevant section

Type of Trust

- ☐ **Registered Managed Investment Scheme**

Australian Registered Scheme Number (ARSN)

--	--	--	--	--	--	--	--

- ☐ **Regulated Trust** (including self-managed superannuation funds and registered charities that are trusts)

Name of Regulator (e.g. ASIC, APRA, ATO, ACNC)

Registration/Licence details or ABN

- ☐ **Other Trust** (unregulated)

Please describe

Beneficiaries of an unregulated trust

Please provide details below of any beneficiaries who directly or indirectly are entitled to an interest of 25% or more of the trust.

1	2
3	4

If there are no beneficiaries of the trust, describe the class of beneficiary (e.g. the name of the family group, class of unit holders, the charitable purpose or charity name):

Other Trust (unregulated) Continued**Settlor details**

Please provide the full name and last known address of the settlor of the trust where the initial asset contribution to the trust was greater than \$10,000.

- ☐ This information is not required if the initial asset contribution was less than \$10,000, and/or
- ☐ This information is not required if the settlor is deceased

Settlor's full name and last known address

Beneficial owners of an unregulated trust

Please provide details below of any beneficial owner of the trust. A beneficial owner is any individual who directly or indirectly has a 25% or greater interest in the trust or is a person who exerts control over the trust. This includes the appointer of the trust who holds the power to appoint or remove the trustees of the trust.

All beneficial owners will need to provide Group A AML/CTF Identity Verification Requirements in Section 9

Beneficial owner 1 or Controlling Person 1

Select:

- ☐ Beneficial owner 1; OR
- ☐ Controlling Person – What is the role e.g. Appointer:

--

Title

First name(s)

Surname

--

--

--

Residential address (not a PO Box/RMB/Locked Bag)

--

Suburb

State

Postcode

Country

--

--

--	--	--	--

--

Date of birth (DD/MM/YYYY)

	/		/	
--	---	--	---	--

Does the beneficial owner named above hold a prominent public position or function in a government body (local, state, territory, national or foreign) or in an international organisation or are you an immediate family member or a business associate of such a person?

- ☐ No ☐ Yes, please give details:

--

Beneficial owner 2 or Controlling Person 2

Select:

- ☐ Beneficial owner 2; OR
- ☐ Controlling Person – What is the role e.g. Appointer:

--

Title

First name(s)

Surname

--

--

--

Residential address (not a PO Box/RMB/Locked Bag)

--

Suburb

State

Postcode

Country

--

--

--	--	--	--

--

Date of birth (DD/MM/YYYY)

	/		/	
--	---	--	---	--

If there are more than 2 beneficial owners, please provide details as an attachment.

Does the beneficial owner named above hold a prominent public position or function in a government body (local, state, territory, national or foreign) or in an international organisation or are you an immediate family member or a business associate of such a person?

☐ No ☐ Yes, please give details:

If there are more than 2 beneficial owners or controlling persons, please copy and complete this page for the other persons or alternatively, provide the additional details as an attachment.

SECTION 5.1 – CUSTODIAN ATTESTATION: CHAPTER 4, PARTS 4.4.18 AND 4.4.19 OF THE AML/CTF RULES

If you are a Company completing this Application Form on behalf of an individual, another company, a trust or other entity, in a Custodial capacity, please complete this section.

In accordance with Chapter 4, part 4.4.19 (1)(a) to (d) of the AML/CTF Rules, does the Custodian meet the definition (see 'Section 10 – Glossary') of a Custodian?

☐ No ☐ Yes

In accordance with Chapter 4, part 4.4.19 (e) of the AML/CTF Rules, do you, in your capacity as Custodian attest that prior to requesting this designated service from Equity Trustees, it has carried out and will continue to carry out, all applicable customer identification procedures on the underlying account holder named or to be named in the Fund's register, including conducting ongoing customer due diligence requirements in accordance with Chapter 15 of the AML/CTF Rules?

☐ No ☐ Yes

If you answered YES to all of the above questions, then Equity Trustees is able to apply the Chapter 4, part 4.4 Custodian rules to this account and will rely upon the customer due diligence conducted by the Custodian on the underlying account holder named or to be named in the Fund's register.

If requested to do so at any time after the provision of this designated service, the Custodian agrees to honour any reasonable request made by Equity Trustees for information or evidence about the underlying account holder in order to allow Equity Trustees to meet its obligations under the AML/CTF Act.

☐ No ☐ Yes

Excepting the below circumstances where the custodian answered NO or did not complete any of the above questions, no other information about the underlying account holder is required to be collected. However, further information about you as the Custodian and as a company is required to be collected and verified as required by the AML/CTF rules. Please complete the rest of this form for the Custodian.

Excepting circumstances:

If you answered NO or did not complete any of the above questions, then we are unable to apply the Chapter 4, part 4.4 Custodian rules to this application. We are therefore obligated to conduct full Know Your Client procedures on the underlying account holder named or to be named in the Fund's register including any named nominee, as well as the trustees, beneficial owners and controlling persons of the underlying named account in addition to the Custodian. Therefore, please complete the relevant forms and provide identity documents for all parties connected to this account.

SECTION 6 – AUTHORISED REPRESENTATIVE, AGENT AND/OR FINANCIAL ADVISER

Please complete if you are appointing an authorised representative, agent and/or financial adviser.

See Group D AML/CTF Identity Verification Requirements in Section 9

- ☐ I am an **authorised representative or agent** as nominated by the investor(s)

You must attach a valid authority such as Power of Attorney, guardianship order, grant of probate, appointment of bankruptcy etc. that is a certified copy. The document must be current and complete, signed by the investor or a court official and permits the authorised representative or agent to transact on behalf of the investor.

Full name of authorised representative or agent

Role held with investor(s)

Signature

Date

- ☐ I am a **financial adviser** as nominated by the investor

Name of adviser

AFSL number

Dealer group

Name of advisory firm

Postage address

Suburb

State

Postcode

Country

Email address

Contact no.

Financial Advice (only complete if applicable)

- ☐ The investor has received personal financial product advice in relation to this investment from a licensed financial adviser and that advice is current.

Financial Adviser Declaration

- ☐ I/We hereby declare that I/we are not a US Person as defined in the PDS/IM.
- ☐ I/We hereby declare that the investor is not a US Person as defined in the PDS/IM.
- ☐ I/We have completed an appropriate Customer Identification Procedure (CIP) on this investor which meets the requirements (per type of investor) set out above,
- ☐ I/We have attached the relevant CIP documents;

Signature

Date

Access to information

Unless you elect otherwise, your authorised representative, agent and/or financial adviser will also be provided access to your investment information and/or receive copies of statements and transaction confirmations. By appointing an authorised representative, agent and/or financial adviser you acknowledge that you have read and agreed to the terms and conditions in the PDS/IM relating to such appointment.

- ☐ Please tick this box if you DO NOT want your authorised representative, agent and/or financial adviser to have access to information about your investment.
- ☐ Please tick this box if you DO NOT want copies of statements and transaction confirmations sent to your authorised representative, agent and/or financial adviser.
- ☐ Please tick this box if you want statements and transaction confirmations sent ONLY to your authorised representative, agent and/or financial adviser.

SECTION 7 – FOREIGN ACCOUNT TAX COMPLIANCE ACT (FATCA), COMMON REPORTING STANDARD (CRS) SELF-CERTIFICATION FORM – ALL INVESTORS MUST COMPLETE

Sub-Section I – Individuals

Please fill this Sub-Section I only if you are an individual. If you are an entity, please fill Sub-Section II.

1. Are you a US tax resident (e.g. US citizen or US resident)?

- ☐ Yes: provide your US Taxpayer Identification Number (TIN) and continue to question 2

Investor 1

Investor 2

- ☐ No: continue to question 2

2. Are you a tax resident of any other country outside of Australia?

- ☐ Yes: state each country and provide your TIN or equivalent (or Reason Code if no TIN is provided) for each jurisdiction below and skip to question 12

Investor 1

Country/Jurisdiction of tax residence	TIN	If no TIN available enter Reason A, B or C
1		
2		

Investor 2

Country/Jurisdiction of tax residence	TIN	If no TIN available enter Reason A, B or C
1		
2		

If more space is needed please provide details as an attachment.

- ☐ No: skip to question 12

Reason Code:

If TIN or equivalent is not provided, please provide reason from the following options:

- Reason A: The country/jurisdiction where the investor is resident does not issue TINs to its residents.
- Reason B: The investor is otherwise unable to obtain a TIN or equivalent number (Please explain why the investor is unable to obtain a TIN in the below table if you have selected this reason).
- Reason C: No TIN is required. (Note. Only select this reason if the domestic law of the relevant jurisdiction does not require the collection of the TIN issued by such jurisdiction).

If Reason B has been selected above, explain why you are not required to obtain a TIN:

	Reason B explanation
Investor 1	
Investor 2	

Sub-Section II – Entities

Please fill this Sub-Section II only if you are an entity. If you are an individual, please fill Sub-Section I.

3. Are you an Australian complying superannuation fund?

- ☐ Yes: skip to question 12
- ☐ No: continue to question 4

FATCA

4. Are you a US Person?

- ☐ Yes: continue to question 5
- ☐ No: skip to question 6

5. Are you a Specified US Person?

- ☐ Yes: provide your TIN below and skip to question 7

- ☐ No: indicate exemption type and skip to question 7

6. Are you a Financial Institution for the purposes of FATCA?

- ☐ Yes: provide your Global Intermediary Identification Number (GIIN)

If you do not have a GIIN, please provide your FATCA status below and then continue to question 7. If you are a sponsored entity, please provide your GIIN above and your sponsor's details below and then continue to question 7.

- ☐ Exempt Beneficial Owner, provide type below:

- ☐ Deemed-Compliant FFI (other than a Sponsored Investment Entity or a Trustee Documented Trust), provide type below:

- ☐ Non-Participating FFI, provide type below:

- ☐ Sponsored Entity. Please provide the Sponsoring Entity's name and GIIN:

- ☐ Trustee Documented Trust. Please provide your Trustee's name and GIIN:

- ☐ Other, provide details:

- ☐ No: continue to question 7

CRS**7. Are you a tax resident of any country outside of Australia and the US?**

- ☐ Yes: state each country and provide your TIN or equivalent (or Reason Code if no TIN is provided) for each jurisdiction below and continue to question 8

Investor 1

Country/Jurisdiction of tax residence	TIN	If no TIN available enter Reason A, B or C
1		
2		

Investor 2

Country/Jurisdiction of tax residence	TIN	If no TIN available enter Reason A, B or C
1		
2		

If more space is needed please provide details as an attachment.

Reason Code:

If TIN or equivalent is not provided, please provide reason from the following options:

- Reason A: The country/jurisdiction where the investor is resident does not issue TINs to its residents.
- Reason B: The investor is otherwise unable to obtain a TIN or equivalent number (Please explain why the investor is unable to obtain a TIN in the below table if you have selected this reason).
- Reason C: No TIN is required. (Note. Only select this reason if the domestic law of the relevant jurisdiction does not require the collection of the TIN issued by such jurisdiction).

If Reason B has been selected above, explain why you are not required to obtain a TIN:

	Reason B explanation
Investor 1	
Investor 2	

- ☐ No: continue to question 8

8. Are you a Financial Institution for the purpose of CRS?

- ☐ Yes: specify the type of Financial Institution below and continue to question 9

☐ Reporting Financial Institution

☐ Non-Reporting Financial Institution:

☐ Trustee Documented Trust

☐ Other: please specify:

- ☐ No: skip to question 10

9. Are you an investment entity resident in a non-participating jurisdiction for CRS purposes and managed by another financial Institution?

- ☐ Yes: skip to question 11

- ☐ No: skip to question 12

Non-Financial Entities

10. Are you an Active Non-Financial Entity (Active NFE)?

- ☐ Yes: specify the type of Active NFE below and skip to question 12:
- ☐ Less than 50% of the entity's gross income from the preceding calendar year is passive income (e.g. dividends, distribution, interests, royalties and rental income) and less than 50% of its assets during the preceding calendar year are assets held for the production of passive income
- ☐ Corporation that is regularly traded or a related entity of a regularly traded corporation
- Provide name of Listed Entity:
- and exchange on which traded:
- ☐ Governmental Entity, International Organisation or Central Bank
- ☐ Other: please specify:
- ☐ No: you are a Passive Non-Financial Entity (Passive NFE). Continue to question 11

Controlling Persons

11. Does one or more of the following apply to you:

- Is any natural person that exercises control over you (for corporations, this would include directors or beneficial owners who ultimately own 25% or more of the share capital) a tax resident of any country outside of Australia?
- If you are a trust, is any natural person including trustee, protector, beneficiary, settlor or any other natural person exercising ultimate effective control over the trust a tax resident of any country outside of Australia?
- Where no natural person is identified as exercising control of the entity, the controlling person will be the natural person(s) who holds the position of senior managing official.

- ☐ Yes. provide controlling person information below:

Controlling person 1

Title	First name(s)	Surname
<input type="text"/>	<input type="text"/>	<input type="text"/>
Residential address (not a PO Box/RMB/Locked Bag)		
<input type="text"/>		
Suburb	State	Postcode
<input type="text"/>	<input type="text"/>	<input type="text"/>
Date of birth (DD/MM/YYYY)		Country
<input type="text"/> / <input type="text"/> / <input type="text"/>		<input type="text"/>

Country/Jurisdiction of tax residence	TIN	If no TIN available enter Reason A, B or C
1		
2		

Controlling person 2

Title	First name(s)	Surname
<input type="text"/>	<input type="text"/>	<input type="text"/>

Residential address (not a PO Box/RMB/Locked Bag)

Suburb	State	Postcode	Country
<input type="text"/>	<input type="text"/>	<input type="text"/> <input type="text"/> <input type="text"/> <input type="text"/>	<input type="text"/>

Date of birth (DD/MM/YYYY) / /

Country/Jurisdiction of tax residence	TIN	If no TIN available enter Reason A, B or C
1		
2		

*If there are more than 2 controlling persons, please provide details as an attachment.***Reason Code:**

If TIN or equivalent is not provided, please provide reason from the following options:

- Reason A: The country/jurisdiction where the investor is resident does not issue TINs to its residents.
- Reason B: The investor is otherwise unable to obtain a TIN or equivalent number (Please explain why the investor is unable to obtain a TIN in the below table if you have selected this reason).
- Reason C: No TIN is required. (Note. Only select this reason if the domestic law of the relevant jurisdiction does not require the collection of the TIN issued by such jurisdiction).

If Reason B has been selected above, explain why you are not required to obtain a TIN:

	Reason B explanation
Investor 1	
Investor 2	

☐ No: continue to question 12**12. Signature and Declaration – ALL investors must sign**☐ I undertake to provide a suitably updated self-certification within 30 days of any change in circumstances which causes the information contained herein to become incorrect.☐ I declare the information above to be true and correct.**Investor 1**

Name of individual/entity

Name of authorised representative

Signature

Date

Investor 2

Name of individual/entity

Name of authorised representative

Signature

Date

SECTION 8 – DECLARATIONS – ALL INVESTORS MUST COMPLETE

In most cases the information that you provide in this form will satisfy the AML/CTF Act, the US Foreign Account Tax Compliance Act (FATCA) and the Common Reporting Standard (CRS). However, in some instances the Responsible Entity may contact you to request further information. It may also be necessary for the Responsible Entity to collect information (including sensitive information) about you from third parties in order to meet its obligations under the AML/CTF Act, FATCA and CRS.

When you complete this Application Form you make the following declarations:

- I/We have received the PDS/IM and made this application in Australia (and/or New Zealand for those offers made in New Zealand).
- I/We have read the PDS/IM to which this Application Form applies and agree to be bound by the terms and conditions of the PDS/IM and the Constitution of the relevant Fund/Trust in which I/we have chosen to invest.
- I/we have carefully considered the features of Fund/Trust as described in the PDS (including its investment objectives, minimum suggested investment timeframe, risk level, withdrawal arrangements and investor suitability) and, after obtaining any financial and/or tax advice that I/we deemed appropriate, am/are satisfied that my/our proposed investment in the Fund/Trust is consistent with my/our investment objectives, financial circumstances and needs.*
- I/We have considered our personal circumstances and, where appropriate, obtained investment and/or taxation advice.
- I/We hereby declare that I/we are not a US Person as defined in the PDS/IM.
- I/We acknowledge that (if a natural person) I am/we are 18 years of age or over and I am/we are eligible to hold units in the Fund/Trust in which I/We have chosen to invest.
- I/We acknowledge and agree that Equity Trustees has outlined in the PDS/IM provided to me/us how and where I/we can obtain a copy of the Equity Trustees Group Privacy Statement.
- I/We consent to the transfer of any of my/our personal information to external third parties including but not limited to fund administrators, fund investment manager(s) and related bodies corporate who are located outside Australia for the purpose of administering the products and services for which I/we have engaged the services of Equity Trustees or its related bodies corporate and to foreign government agencies for reporting purposes (if necessary).
- I/we hereby confirm that the personal information that I/we have provided to Equity Trustees is correct and current in every detail, and should these details change, I/we shall promptly advise Equity Trustees in writing of the change(s).
- I/We agree to provide further information or personal details to the Responsible Entity if required to meet its obligations under anti-money laundering and counter-terrorism legislation, US tax legislation or reporting legislation and acknowledge that processing of my/our application may be delayed and will be processed at the unit price applicable for the Business Day as at which all required information has been received and verified.
- If I/we have provided an email address, I/we consent to receive ongoing investor information including PDS/IM information, confirmations of transactions and additional information as applicable via email.
- I/We acknowledge that Equity Trustees does not guarantee the repayment of capital or the performance of the Fund/Trust or any particular rate of return from the Fund/Trust.
- I/We acknowledge that an investment in the Fund/Trust is not a deposit with or liability of Equity Trustees and is subject to investment risk including possible delays in repayment and loss of income or capital invested.
- I/We acknowledge that Equity Trustees is not responsible for the delays in receipt of monies caused by the postal service or the investor's bank.
- If I/we lodge a fax application request, I/we acknowledge and agree to release, discharge and agree to indemnify Equity Trustees from and against any and all losses, liabilities, actions, proceedings, account claims and demands arising from any fax application.
- If I/we have completed and lodged the relevant sections on authorised representatives, agents and/or financial advisers on the Application Form then I/we agree to release, discharge and indemnify Equity Trustees from and against any and all losses, liabilities, actions, proceedings, account claims and demands arising from Equity Trustees acting on the instructions of my/our authorised representatives, agents and/or financial advisers.
- If this is a joint application each of us agrees that our investment is held as joint tenants.
- I/We acknowledge and agree that where the Responsible Entity, in its sole discretion, determines that:
 - I/we are ineligible to hold units in a Fund/Trust or have provided misleading information in my/our Application Form; or
 - I/we owe any amounts to Equity Trustees, then I/we appoint the Responsible Entity as my/our agent to submit a withdrawal request on my/our behalf in respect of all or part of my/our units, as the case requires, in the Fund/Trust.
- **For Wholesale Clients*** – I/We acknowledge that I am/we are a Wholesale Client (as defined in Section 761G of the Corporations Act 2001 (Cth)) and are therefore eligible to hold units in the Fund/Trust.
- **For New Zealand applicants*** – I/we have read the terms of the offer relating to New Zealand investors, including the New Zealand warning statement.
- **For New Zealand Wholesale Investors*** – I/We acknowledge and agree that:
 - I/We have read the “New Zealand Wholesale Investor Fact Sheet” and PDS/IM or “New Zealand Investors: Selling Restriction” for the Fund/Trust;
 - I am/We are a Wholesale Investor and am/are therefore eligible to hold units in the Fund/Trust; and
 - I/We have not:

- Offered, sold, or transferred, and will not offer, sell, or transfer, directly or indirectly, any units in the Fund/Trust;
 - Granted, issued, or transferred, and will not grant, issue, or transfer, any interests in or options over, directly or indirectly, any units in the Fund/Trust; and
 - Distributed and will not distribute, directly or indirectly, the PDS/IM or any other offering materials or advertisement in relation to any offer of units in the Fund/Trust, in each case in New Zealand, other than to a person who is a Wholesale Investor; and
- I/We will notify Equity Trustees if I/we cease to be a Wholesale Investor; and
 - I/We have separately provided a signed Wholesale Investor Certification located at the end of this Application Form.

All references to Wholesale Investor in this Declaration are a reference to Wholesale Investor in terms of clause 3(2) of Schedule 1 of the Financial Markets Conduct Act 2013 (New Zealand).

* Disregard if not applicable.

***Terms and conditions for collection of Tax File Numbers (TFN) and Australian Business Numbers (ABN)**

Collection of TFN and ABN information is authorised and its use and disclosure strictly regulated by tax laws and the Privacy Act. Investors must only provide an ABN instead of a TFN when the investment is made in the course of their enterprise. You are not obliged to provide either your TFN or ABN, but if you do not provide either or claim an exemption, we are required to deduct tax from your distribution at the highest marginal tax rate plus Medicare levy to meet Australian taxation law requirements.

For more information about the use of TFNs for investments, contact the enquiries section of your local branch of the ATO. Once provided, your TFN will be applied automatically to any future investments in the Fund/Trust where formal application procedures are not required (e.g. distribution reinvestments), unless you indicate, at any time, that you do not wish to quote a TFN for a particular investment. Exempt investors should attach a copy of the certificate of exemption. For super funds or trusts list only the applicable ABN or TFN for the super fund or trust.

When you sign this Application Form you declare that you have read, agree to and make the declarations above

Investor 1

Name of individual/entity

Capacity (e.g. Director, Secretary, Authorised signatory)

Signature

Date

Company Seal (if applicable)

Investor 2

Name of individual/entity

Capacity (e.g. Director, Secretary, Authorised signatory)

Signature

Date

SECTION 9 – AML/CTF IDENTITY VERIFICATION REQUIREMENTS

The AML/CTF Act requires the Responsible Entity to adopt and maintain an Anti-Money Laundering and Counter-Terrorism Financing (AML/CTF) Program. The AML/CTF Program includes ongoing customer due diligence, which may require the Responsible Entity to collect further information.

- Identification documentation provided must be in the name of the investor.
- Non-English language documents must be translated by an accredited translator. Provide both the foreign language document and the accredited English translation.
- Applications made without providing this information cannot be processed until all the necessary information has been provided.
- If you are unable to provide the identification documents described please contact Equity Trustees.

These documents should be provided as an original or a CERTIFIED COPY of the original.

Who can certify?

Below is an example of who can certify proof of ID documents under the AML/CTF requirements:

- Bailiff
- Bank officer with 5 or more years of continuous service
- Building society officer with 5 or more years of continuous service
- Chiropractor (licensed or registered)
- Clerk of court
- Commissioner for Affidavits
- Commissioner for Declarations
- Credit union officer with 5 or more years of continuous service
- Dentist (licensed or registered)
- Fellow of the National Tax Accountant's Association
- Finance company officer with 5 or more years of continuous service
- Judge of a court
- Justice of the peace
- Legal practitioner (licensed or registered)
- Magistrate
- Marriage celebrant licensed or registered under Subdivision C of Division 1 of Part IV of the Marriage Act 1961
- Master of a court
- Medical practitioner (licensed or registered)
- Member of Chartered Secretaries Australia
- Member of Engineers Australia, other than at the grade of student
- Member of the Association of Taxation and Management Accountants
- Member of the Australian Defence Force with 5 or more years of continuous service
- Member of the Institute of Chartered Accountants in Australia, the Australian Society of Certified Practising Accountants or the Institute of Public Accountants
- Member of the Parliament of the Commonwealth, a State, a Territory Legislature, or a local government authority of a State or Territory
- Minister of religion licensed or registered under Subdivision A of Division 1 of Part IV of the Marriage Act 1961
- Nurse (licensed or registered)
- Optometrist (licensed or registered)
- Permanent employee of Commonwealth, State or local government authority with at least 5 or more years of continuous service.
- Permanent employee of the Australian Postal Corporation with 5 or more years of continuous service
- Pharmacist (licensed or registered)
- Physiotherapist (licensed or registered)
- Police officer
- Psychologist (licensed or registered)
- Registrar, or Deputy Registrar, of a court
- Sheriff
- Teacher employed on a full-time basis at a school or tertiary education institution
- Veterinary surgeon (licensed or registered)

When certifying documents, the following process must be followed:

- All copied pages of original proof of ID documents must be certified and the certification must not be older than 2 years.
- The authorised individual must ensure that the original and the copy are identical; then write or stamp on the copied document "certified true copy". This must be followed by the date and signature, printed name and qualification of the authorised individual.
- In cases where an extract of a document is photocopied to verify customer ID, the authorised individual should write or stamp "certified true extract".

GROUP A – Individuals/Joint

Each individual investor, individual trustee, beneficial owner, or individual agent or authorised representative must provide one of the following primary photographic ID:

- ☐ A current Australian driver's licence (or foreign equivalent) that includes a photo and signature.
- ☐ An Australian passport (not expired more than 2 years previously).
- ☐ A foreign passport or international travel document (must not be expired)
- ☐ An identity card issued by a State or Territory Government that includes a photo.

If you do NOT own one of the above ID documents, please provide one valid option from Column A and one valid option from Column B.

Column A	Column B
<input type="checkbox"/> Australian birth certificate.	<input type="checkbox"/> A document issued by the Commonwealth or a State or Territory within the preceding 12 months that records the provision of financial benefits to the individual and which contains the individual's name and residential address.
<input type="checkbox"/> Australian citizenship certificate.	<input type="checkbox"/> A document issued by the Australian Taxation Office within the preceding 12 months that records a debt payable by the individual to the Commonwealth (or by the Commonwealth to the individual), which contains the individual's name and residential address. Block out the TFN before scanning, copying or storing this document.
<input type="checkbox"/> Pension card issued by Department of Human Services.	<input type="checkbox"/> A document issued by a local government body or utilities provider within the preceding 3 months which records the provision of services to that address or to that person (the document must contain the individual's name and residential address).
	<input type="checkbox"/> If under the age of 18, a notice that: was issued to the individual by a school principal within the preceding 3 months; and contains the name and residential address; and records the period of time that the individual attended that school.

GROUP B – Companies

For Australian Registered Companies, provide one of the following (must clearly show the Company's full name, type (private or public) and ACN):

- ☐ A certified copy of the company's Certificate of Registration or incorporation issued by ASIC.
- ☐ A copy of information regarding the company's licence or other information held by the relevant Commonwealth, State or Territory regulatory body e.g. AFSL, RSE, ACL etc.
- ☐ A full company search issued in the previous 3 months or the company's last annual statement issued by ASIC.
- ☐ If the company is listed on an Australian securities exchange, provide details of the exchange and the ticker (issuer) code.
- ☐ If the company is a majority owned subsidiary of a company listed on an Australian securities exchange, provide details of the holding company name, its registration number e.g. ACN, the securities exchange and the ticker (issuer) code.

All of the above must clearly show the company's full name, its type (i.e. public or private) and the ACN issued by ASIC.

For Foreign Companies, provide one of the following:

- ☐ A certified copy of the company's Certificate of Registration or incorporation issued by the foreign jurisdiction(s) in which the company was incorporated, established or formed.
- ☐ A certified copy of the company's articles of association or constitution.
- ☐ A copy of a company search on the ASIC database or relevant foreign registration body.
- ☐ A copy of the last annual statement issued by the company regulator.

All of the above must clearly show the company's full name, its type (i.e. public or private) and the ARBN issued by ASIC, or the identification number issued to the company by the foreign regulator.

In addition, please provide verification documents for each beneficial owner or controlling person (senior managing official and shareholder) as listed under Group A.

A beneficial owner of a company is any person entitled (either directly or indirectly) to exercise 25% or more of the voting rights, including a power of veto, or who holds the position of senior managing official (or equivalent) and is thus the controlling person.

GROUP C – Trusts

For a Registered Managed Investment Scheme, Government Superannuation Fund or a trust registered with the Australian Charities and Not-for-Profit Commission (ACNC), or a regulated, complying Superannuation Fund, retirement or pension fund (including a self-managed super fund), provide one of the following:

- ☐ A copy of the company search of the relevant regulator's website e.g. APRA, ASIC or ATO.
- ☐ A copy or relevant extract of the legislation establishing the government superannuation fund sourced from a government website.
- ☐ A copy from the ACNC of information registered about the trust as a charity
- ☐ Annual report or audited financial statements.
- ☐ A certified copy of a notice issued by the ATO within the previous 12 months.
- ☐ A certified copy of an extract of the Trust Deed (i.e. cover page and signing page and first two pages that describes the trust, its purpose, appointer details and settlor details etc.)

For all other Unregulated trust (including a Foreign trust), provide the following:

- ☐ A certified copy of an extract of the Trust Deed (i.e. cover page and signing page and first two pages that describes the trust, its purpose, appointer details and settlor details etc.)

If the trustee is an individual, please also provide verification documents for one trustee as listed under Group A.

If the trustee is a company, please also provide verification documents for a company as listed under Group B.

GROUP D – Authorised Representatives and Agents

In addition to the above entity groups:

- ☐ If you are an **Individual Authorised Representative or Agent** – please also provide the identification documents listed under Group A.
- ☐ If you are a **Corporate Authorised Representative or Agent** – please also provide the identification documents listed under Group B.

All Authorised Representatives and Agents must also provide a certified copy of their authority to act for the investor e.g. the POA, guardianship order, Executor or Administrator of a deceased estate, authority granted to a bankruptcy trustee, authority granted to the State or Public Trustee etc.

SECTION 10 – GLOSSARY

Custodian – means a company that:

- a) is acting in the capacity of a trustee; and
- b) is providing a custodial or depository service of the kind described in item 46 of table 1 in subsection 6(2) of the Anti-Money Laundering and Counter-Terrorism Financing Act 2006 (AML/CTF Act); and
- c) either:
 - i. holds an Australian financial services licence authorising it to provide custodial or depository services under the Corporations Act 2001; or
 - ii. is exempt under the Corporations Act 2001 from the requirement to hold such a licence; and
- d) either:
 - i. satisfies one of the 'geographical link' tests in subsection 6(6) of the AML/CTF Act; or
 - ii. has certified in writing to the relevant reporting entity that its name and enrolment details are entered on the Reporting Entities Roll; and
- e) has certified in writing to the relevant reporting entity that it has carried out all applicable customer identification procedures and ongoing customer due diligence requirements in accordance with Chapter 15 of the AML/CTF Rules in relation to its underlying customers prior to, or at the time of, becoming a customer of the reporting entity.